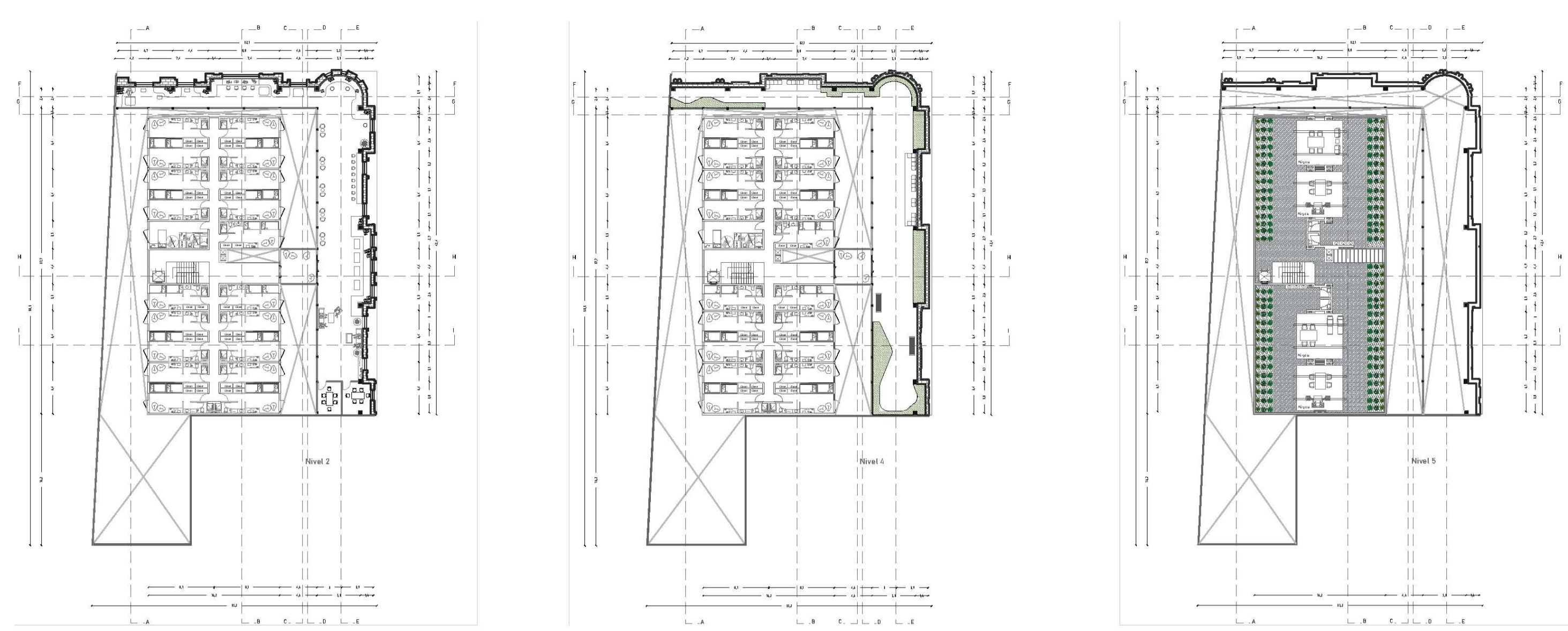
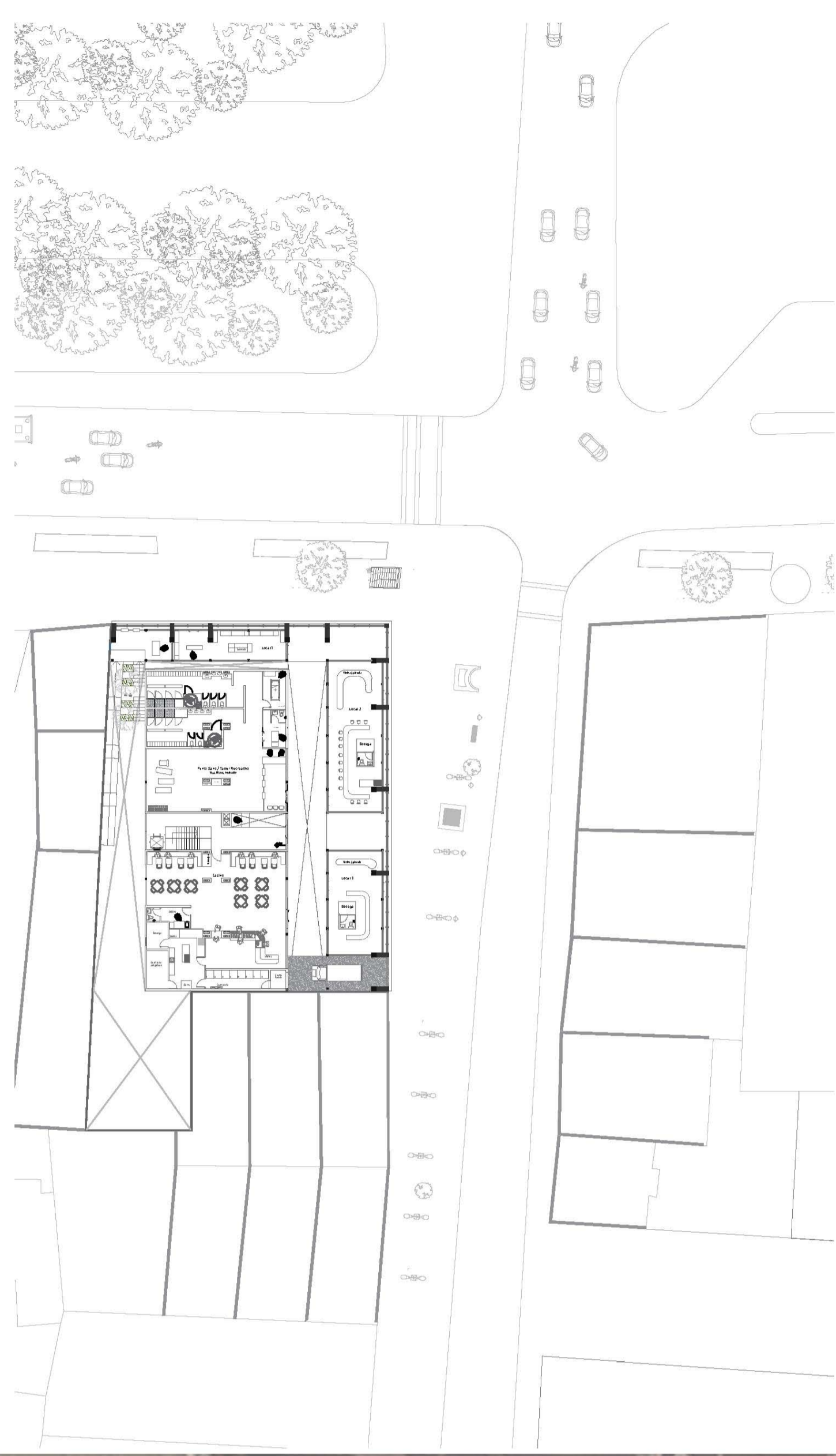
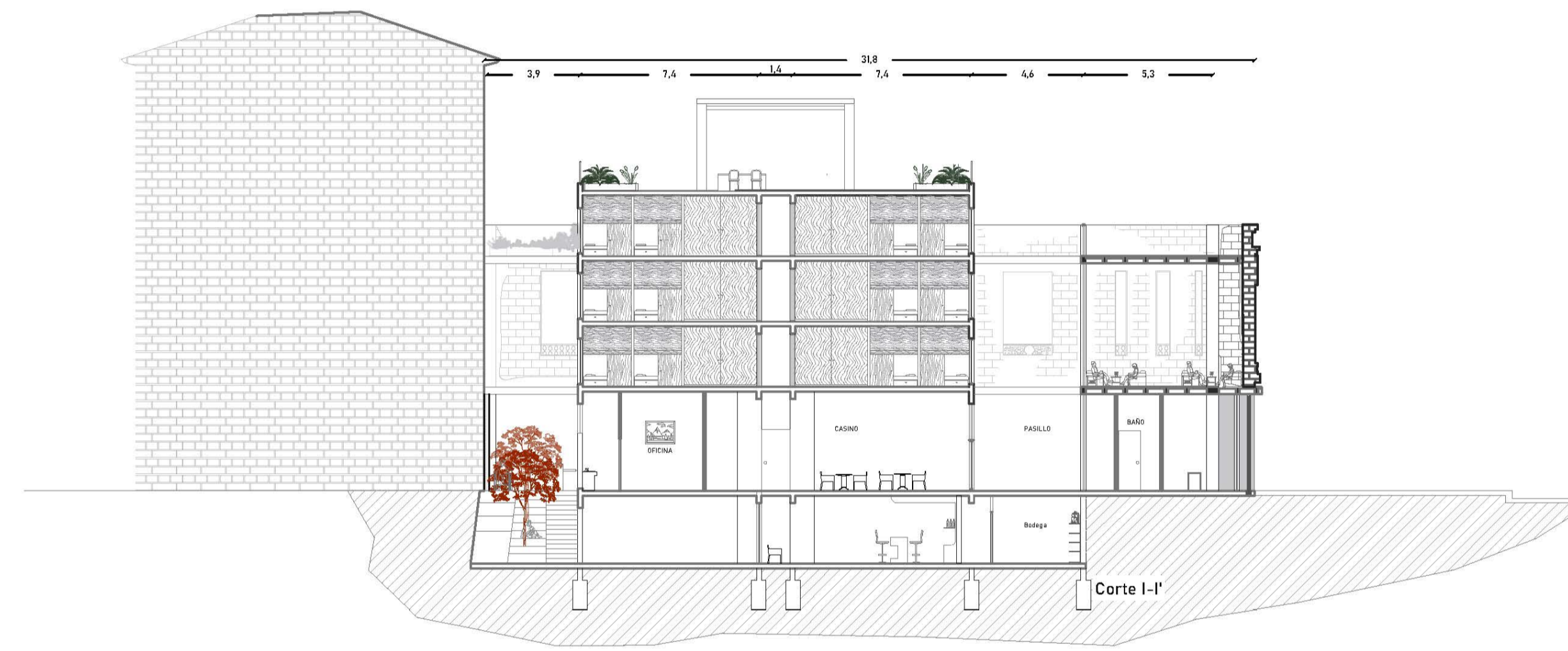


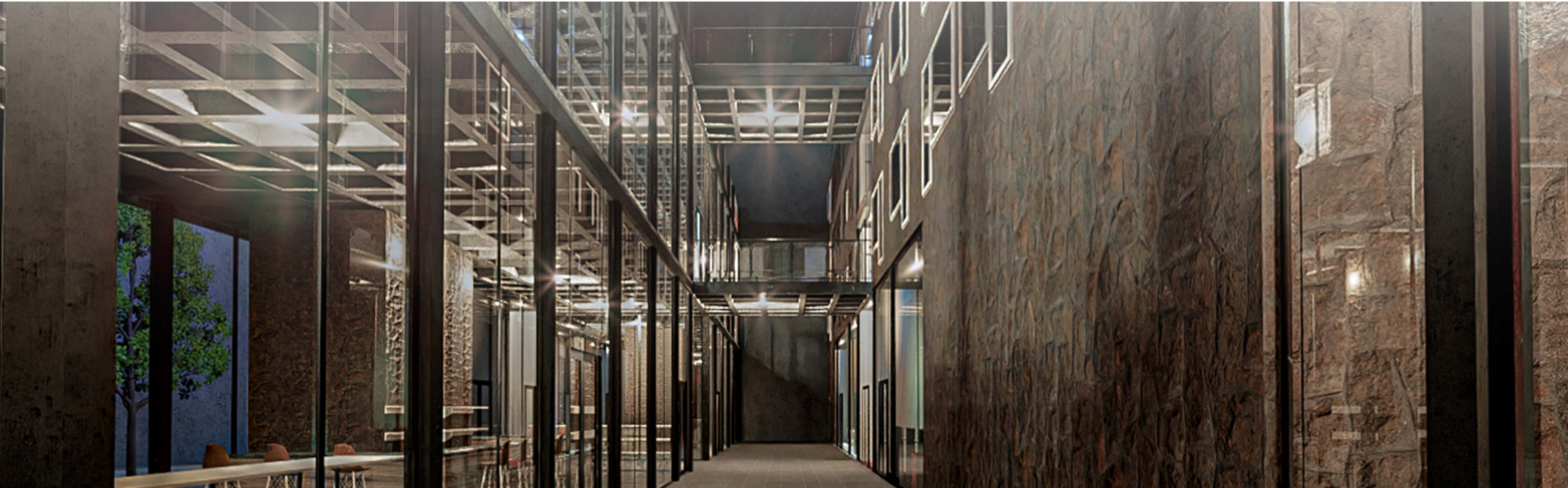
Corte B-B'

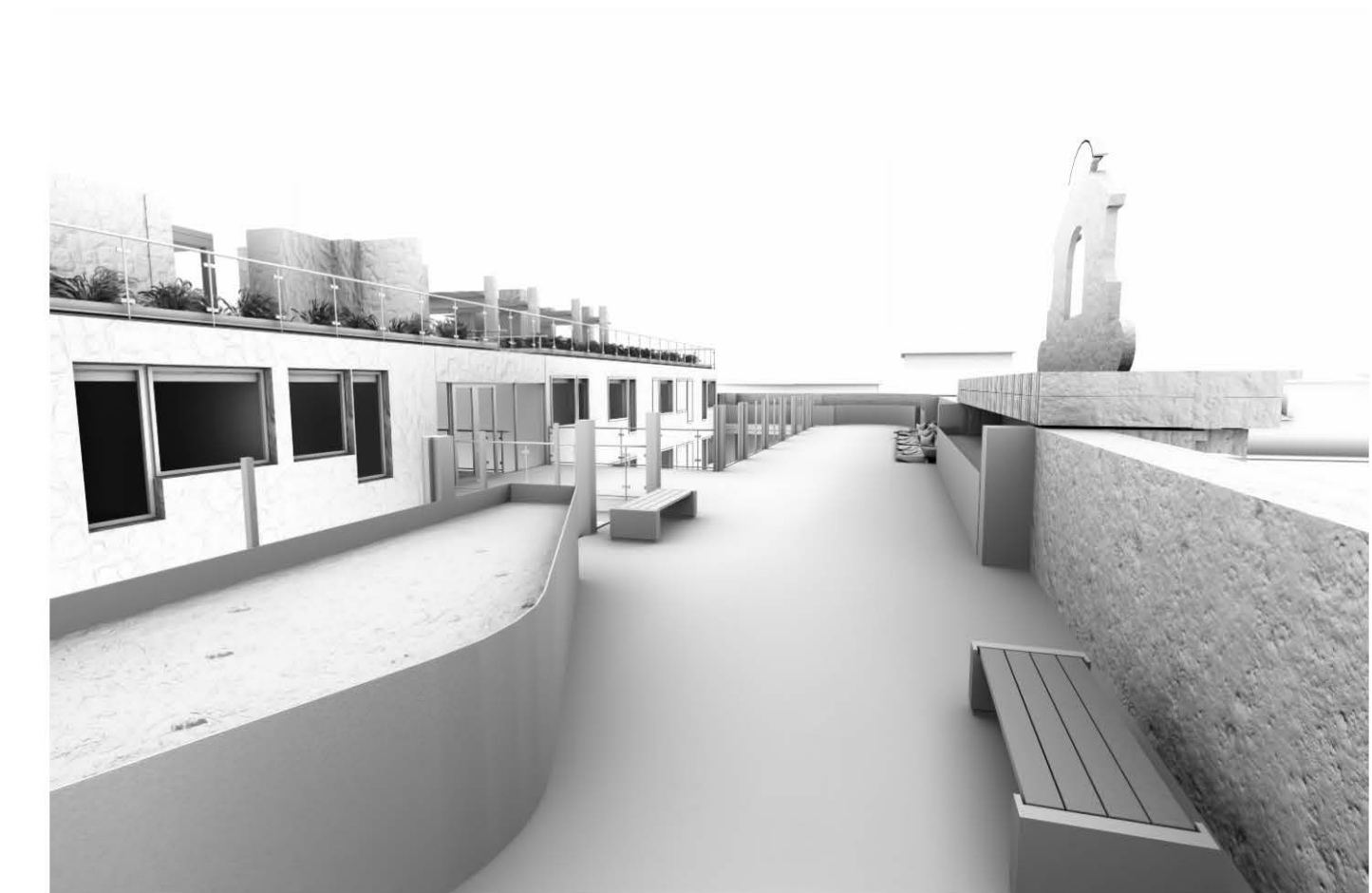
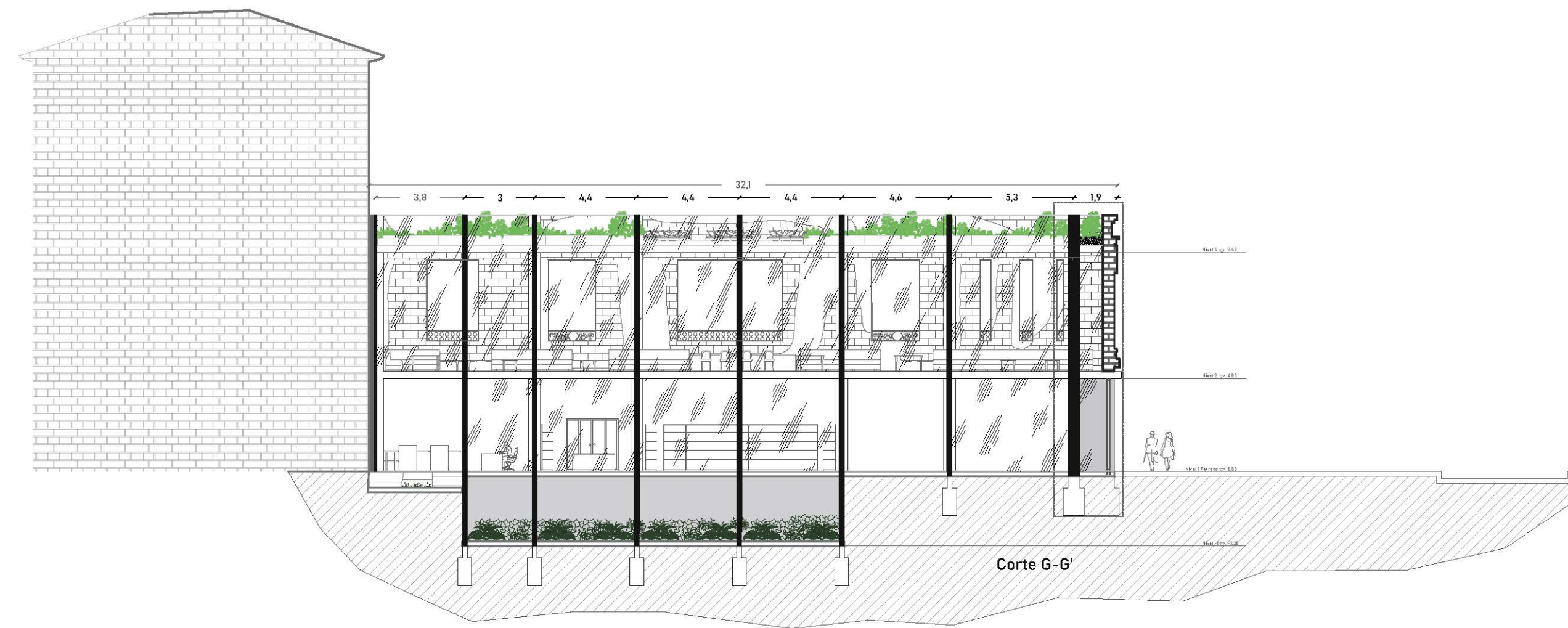
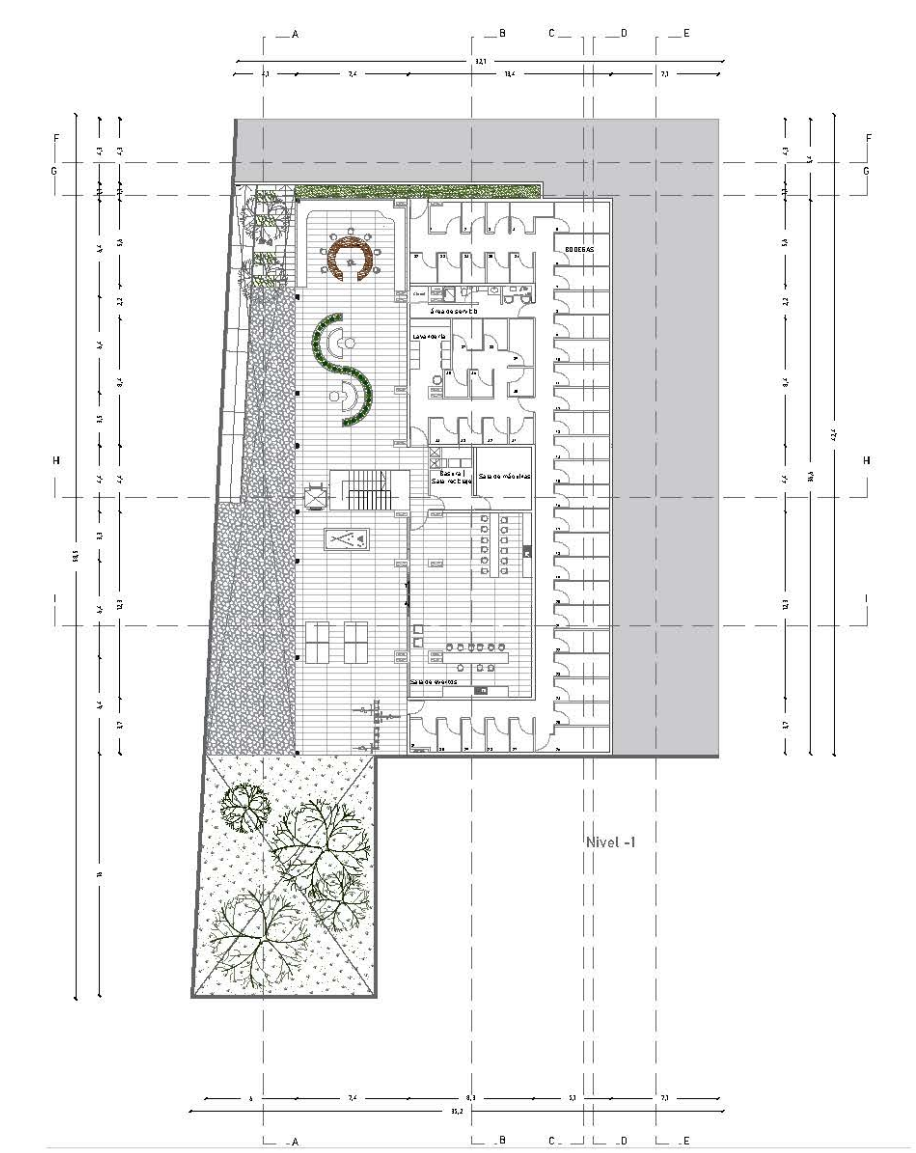
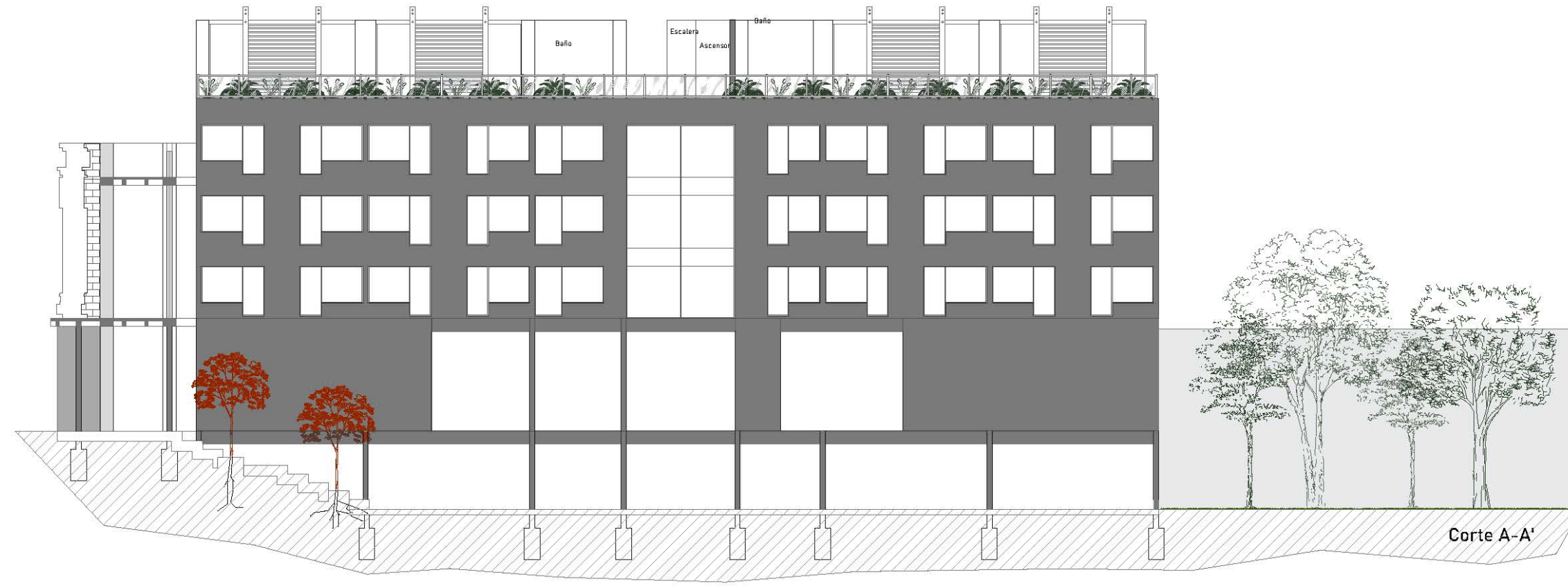
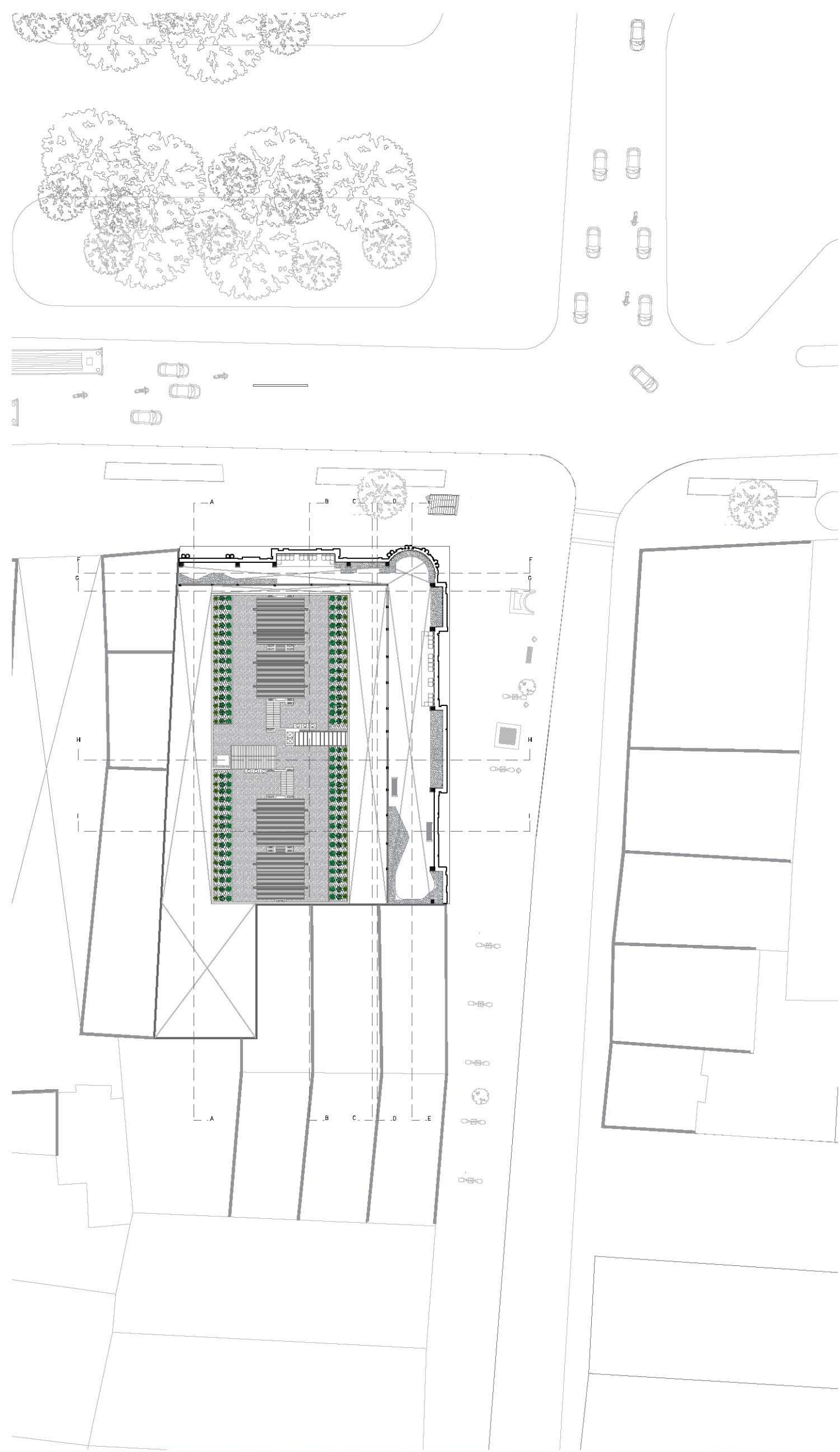


ENTRADA RESIDENCIAL - PATIO PRIVADO - ESPACIO DE ENTRETENIMIENTO



ENTRADA ORIGINAL AL PALACIO ALDUNATE- PATIO PÚBLICO - PASEO PEATONAL Y ESPACIOS COMUNES





PLATAFORMA HABITABLE - NIVEL 4 - TERRAZA MIRADOR Y JARDINERÍA

