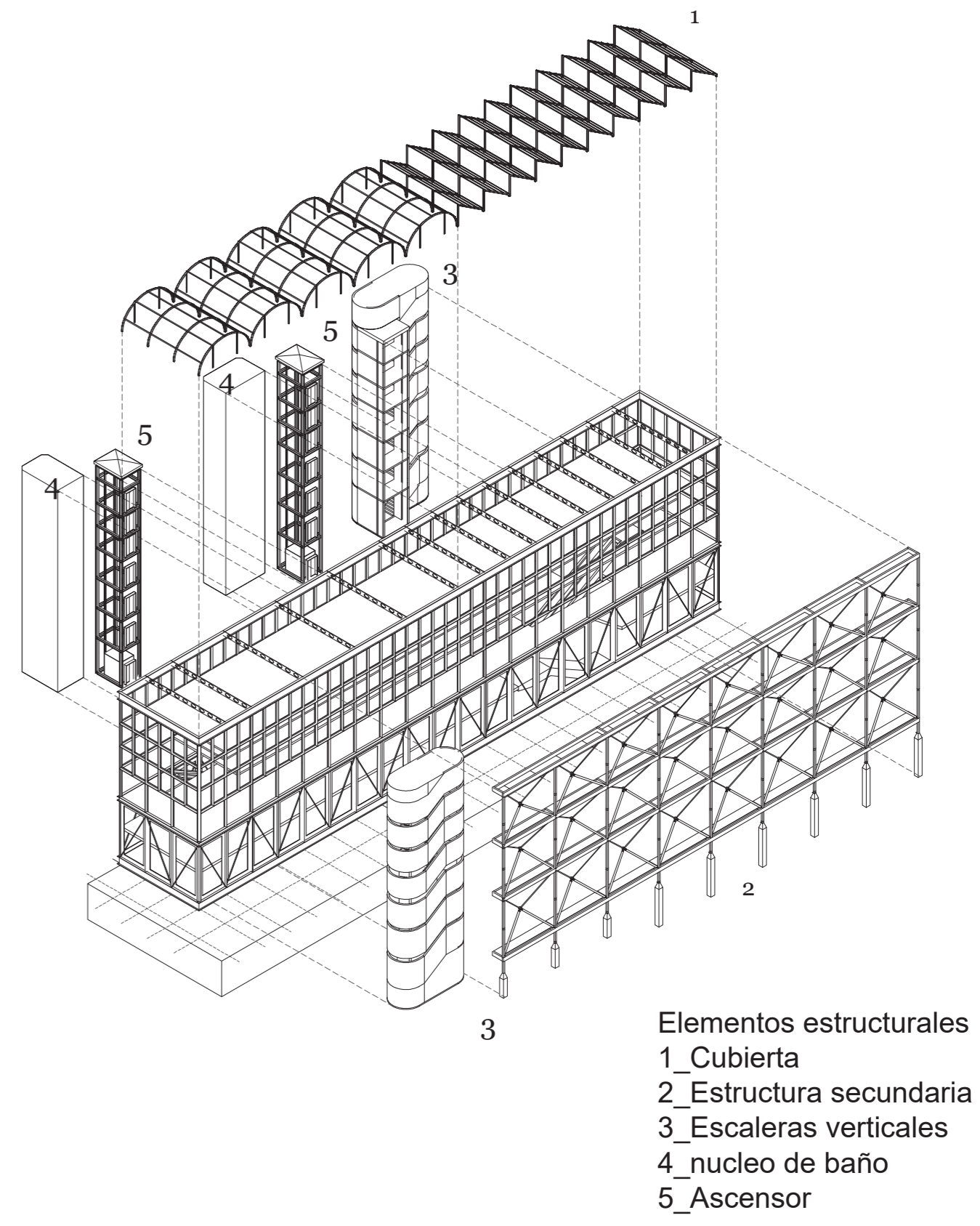
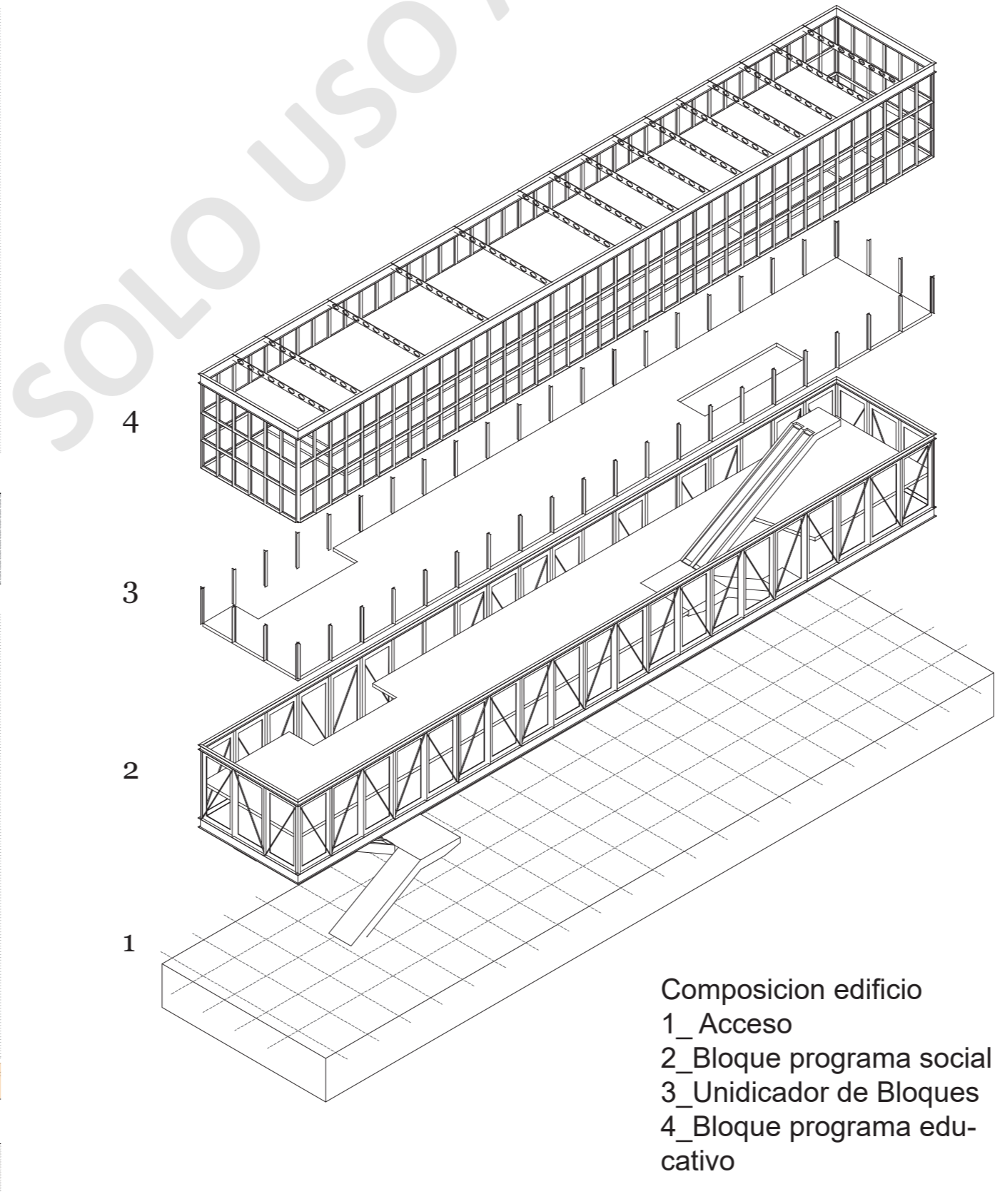
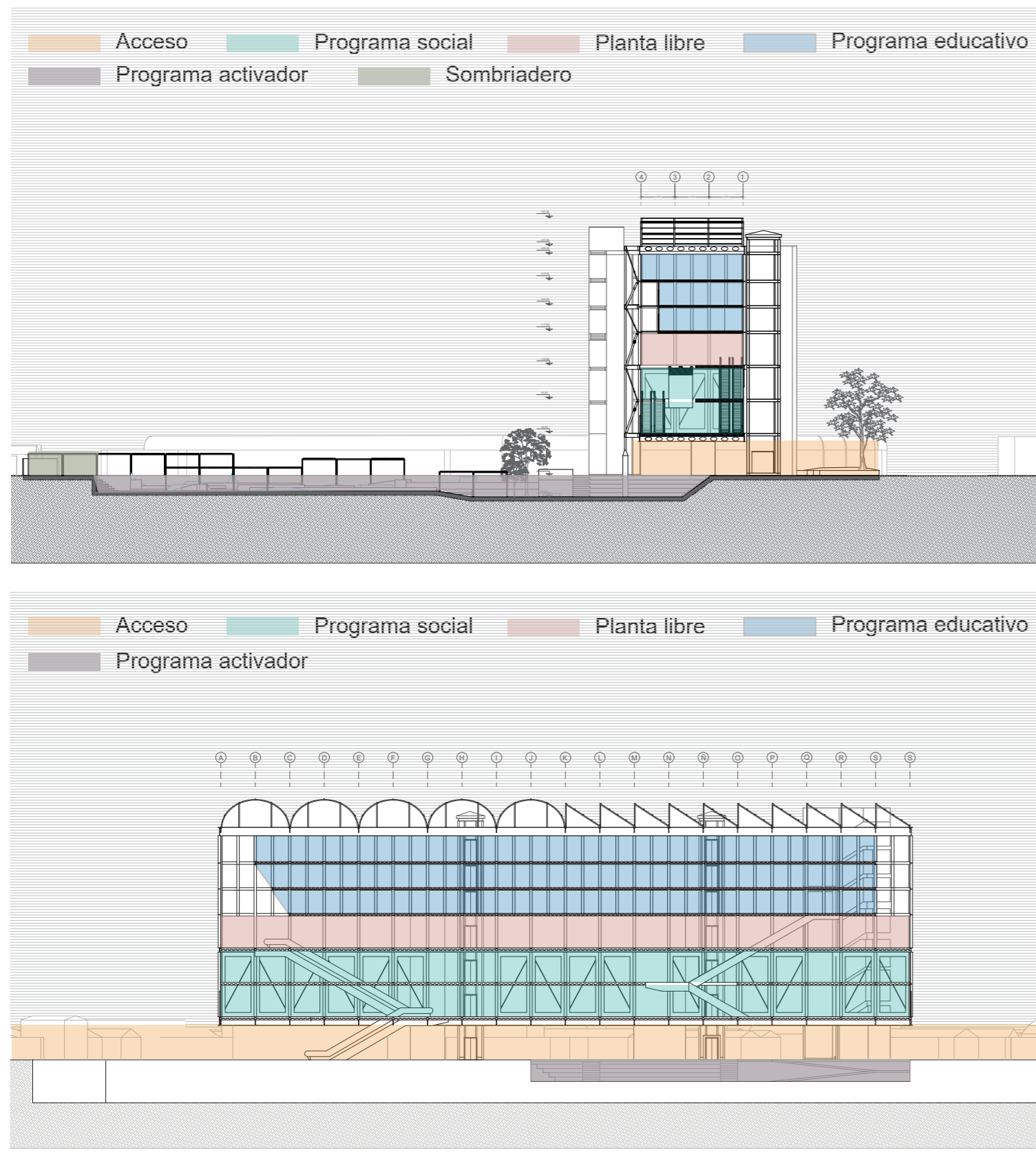
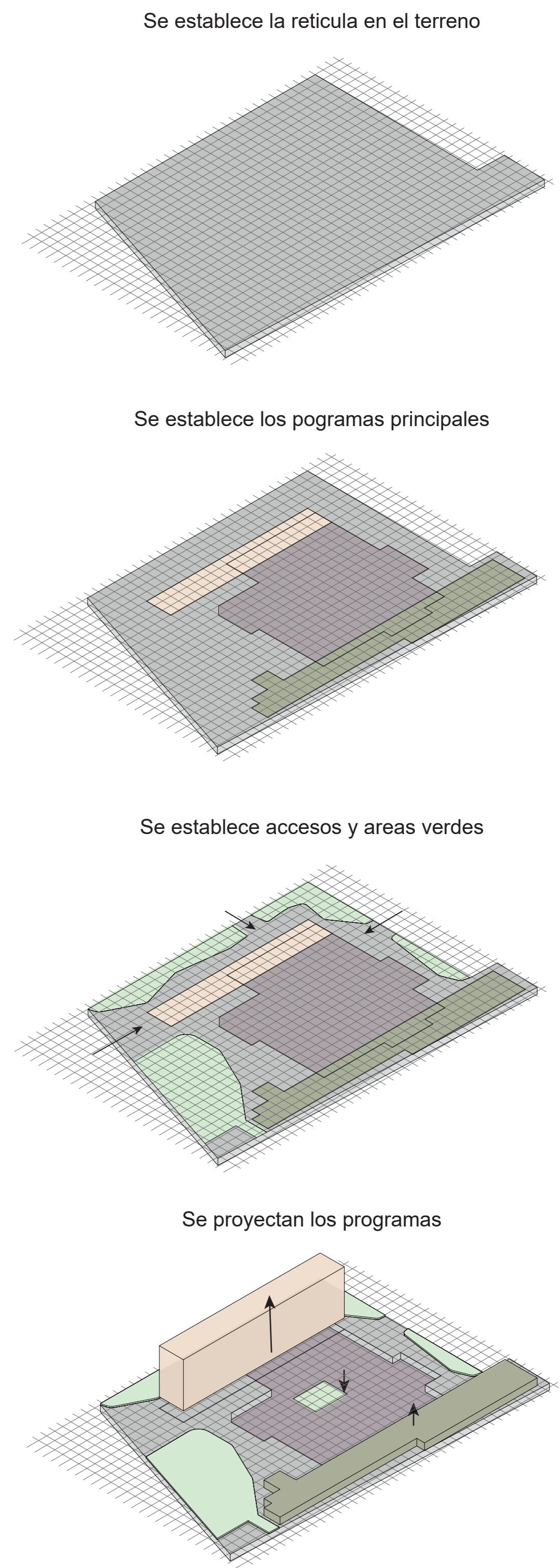
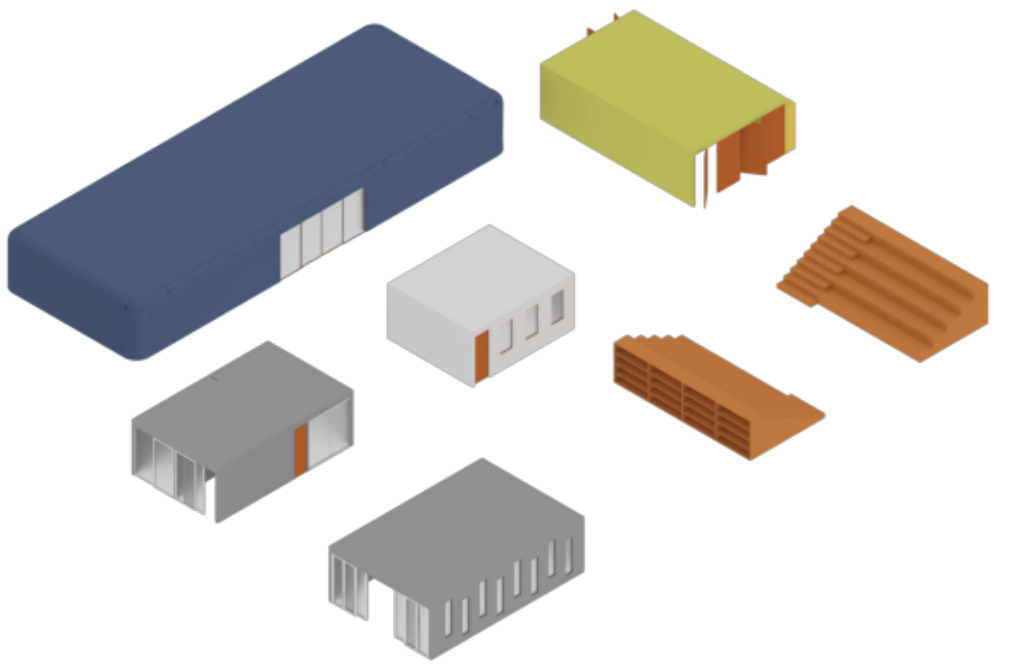


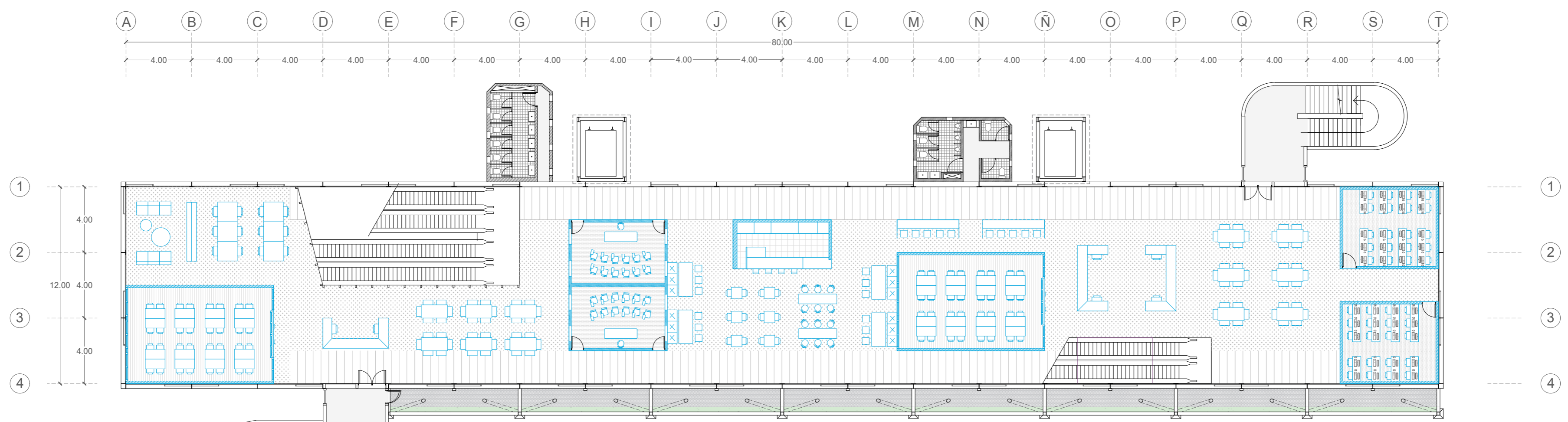
Centro de Desarrollo Educativo (CDE)



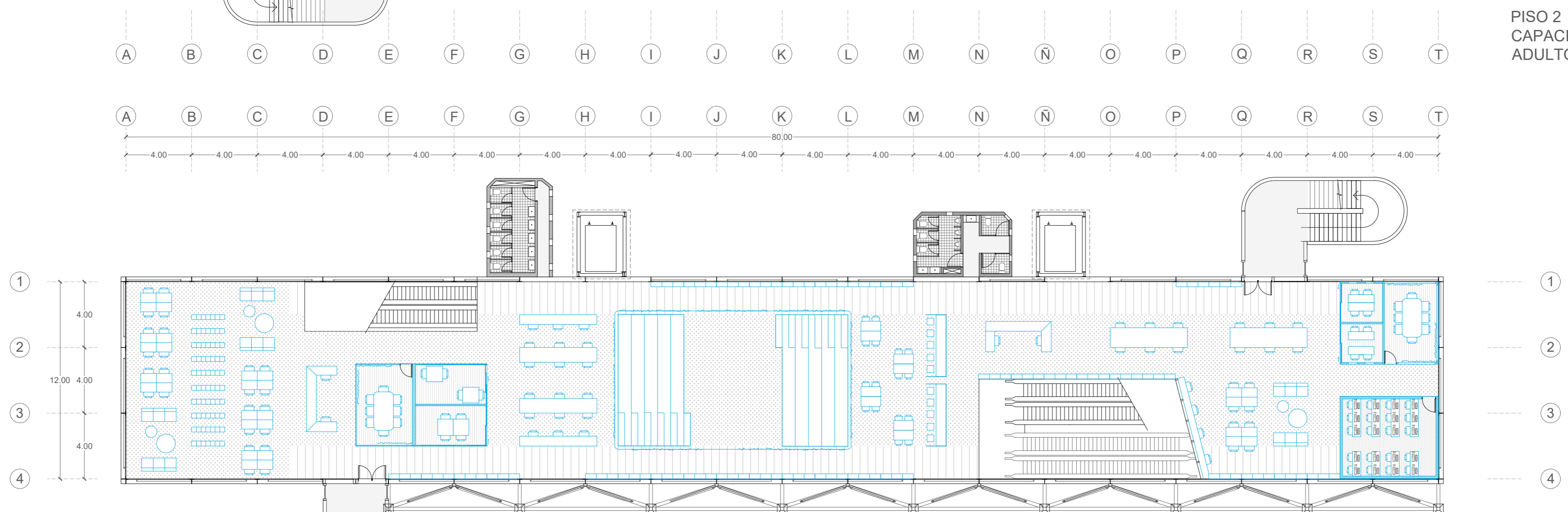
Se propone una serie de espacios o elementos secundarios que complementen el trabajo en los diferentes niveles. En el edificio hay 24 elementos secundarios conformados por los siguientes:



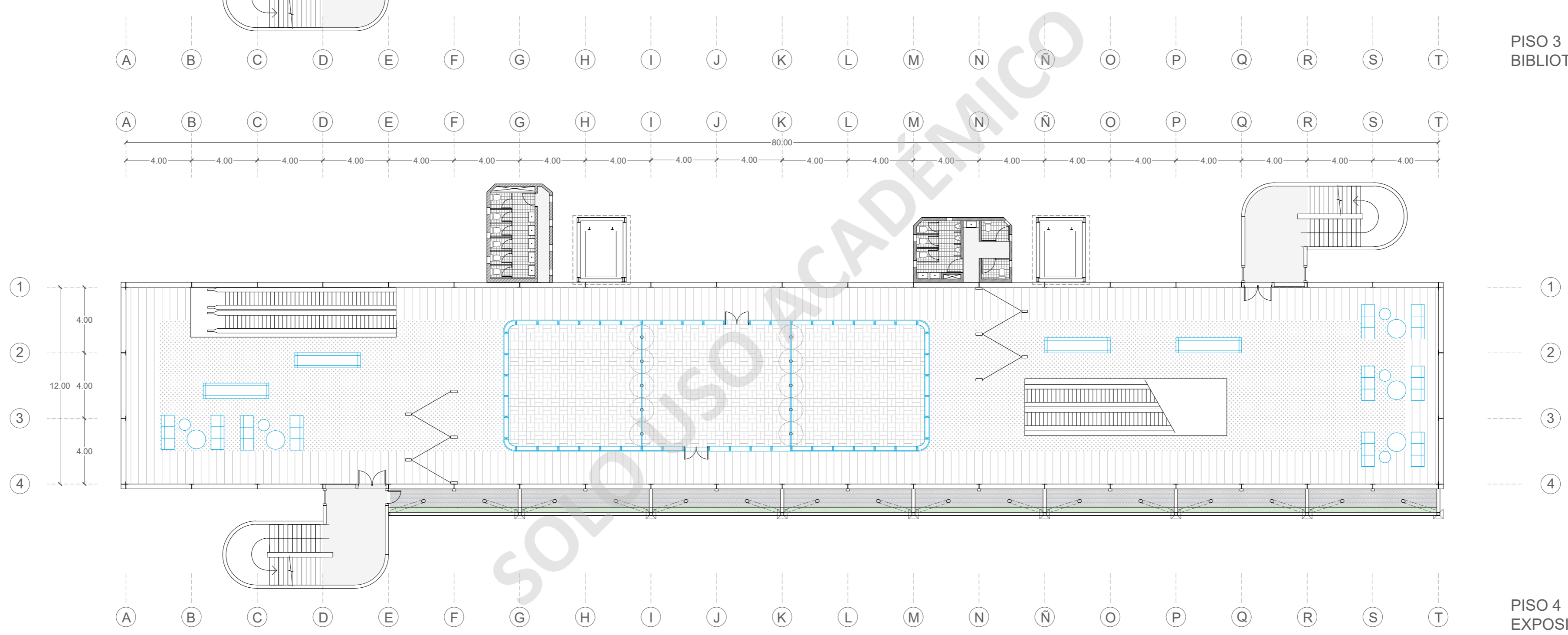
AULAS	TALLERES	SALAS MULTIUSO	SERVICIOS
<p>SALAS CLASES 54 M2 28-32 alm</p> <p>SALAS ESTUDIOS 40 M2</p>	<p>SALAS ARTE 20 M2 10 alm</p> <p>SALAS MUSICA 34 M2 17 alm</p>	<p>GINNASIO 176 M2</p> <p>SALAS EXPOSICION 208 M2</p>	<p>CAFETERIA 18 M2</p> <p>COCINA 32 M2</p>
<p>SALAS CLASES 24 M2 12-16 alm</p> <p>SALAS COMPUTACION 30 M2 16-20 alm</p>	<p>SALAS DANZA 27 M2 14 alm</p>		<p>AUDITORIO 112 M2</p>



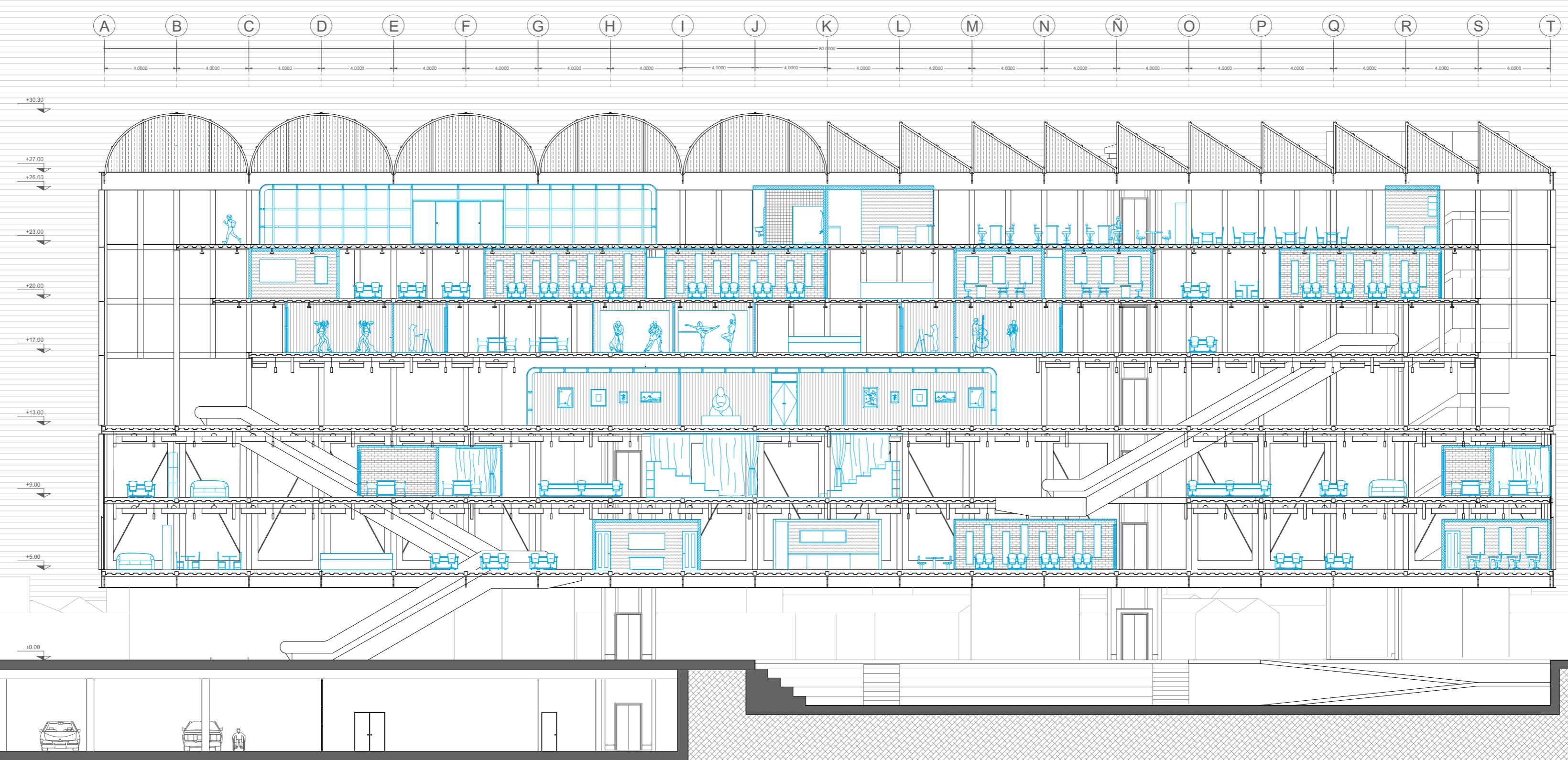
PISO 2
CAPACITACION
ADULTO
ESC 1:200



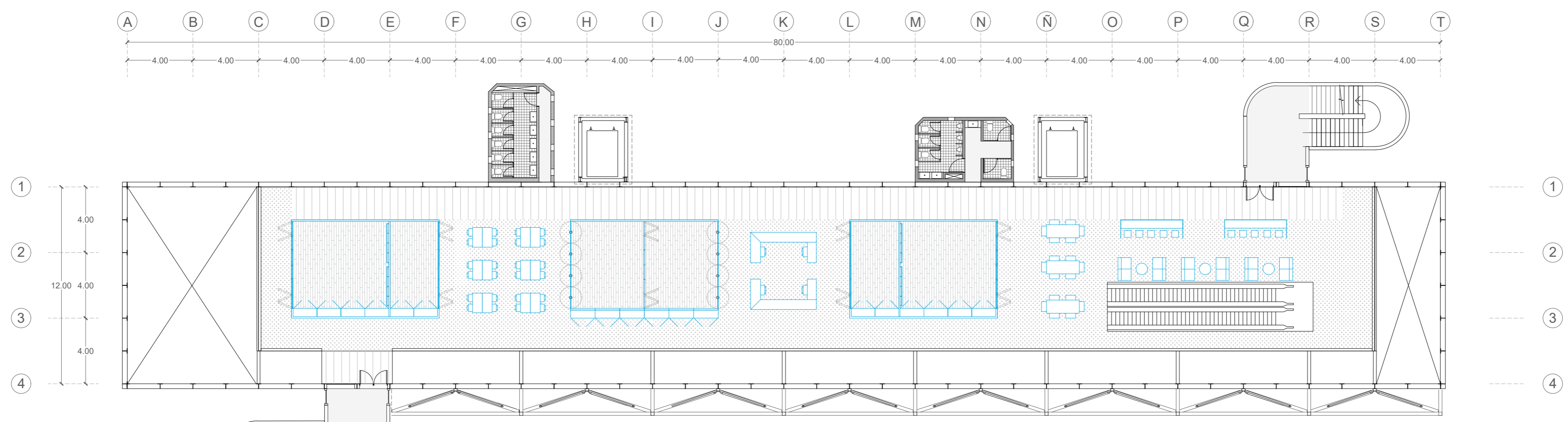
PISO 3
BIBLIOTECA
ESC 1:200



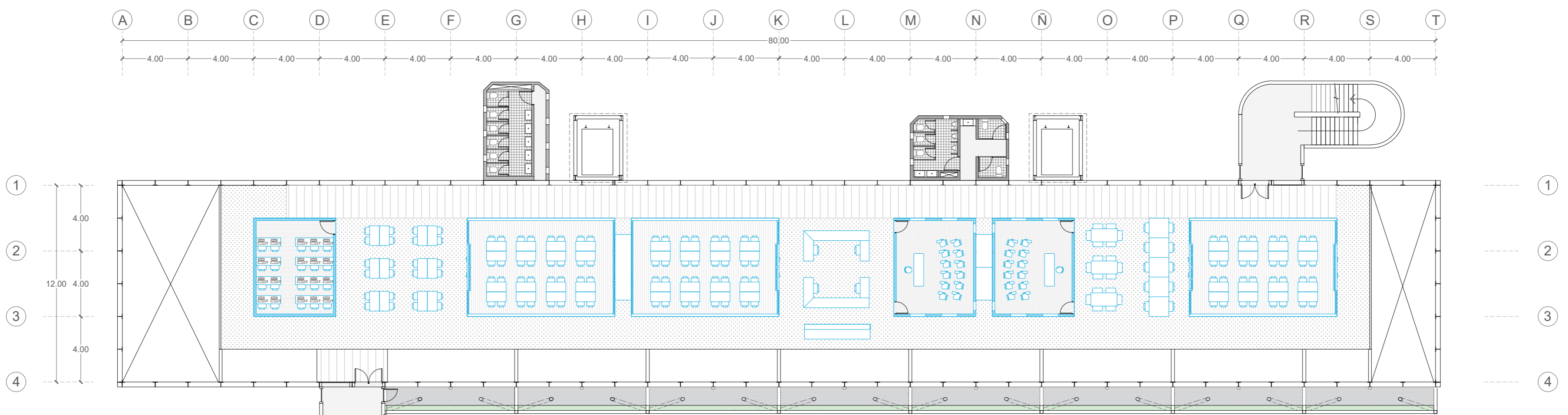
PISO 4
EXPOSICION
ESC 1:200



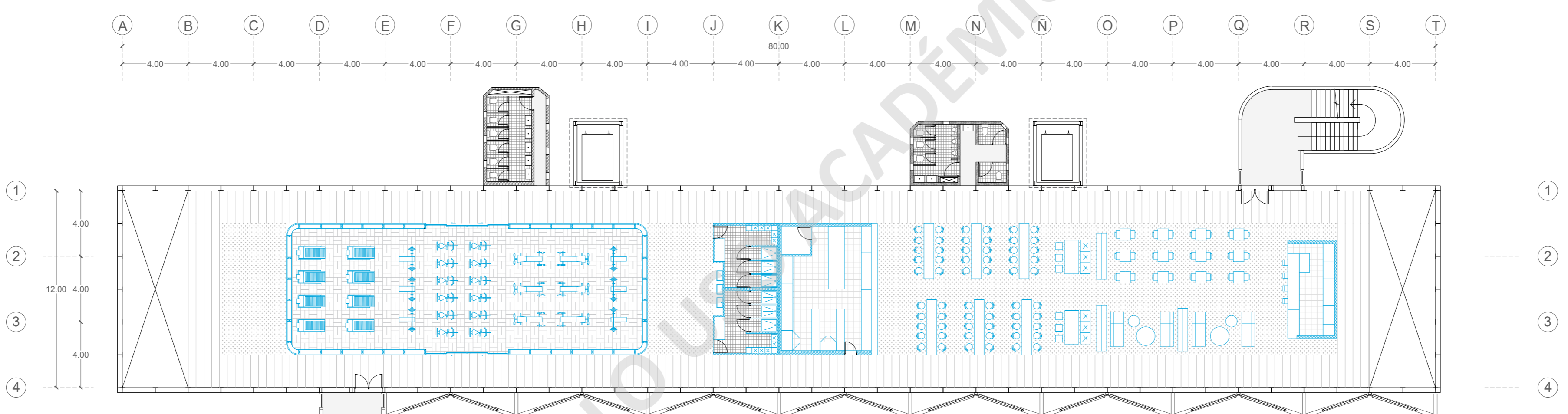
CORTE A-A
LONGITUDINAL
ESC 1:200



PISO 5
TALLERES
ESC 1:200



PISO 6
S. DE CLASES
ESC 1:200

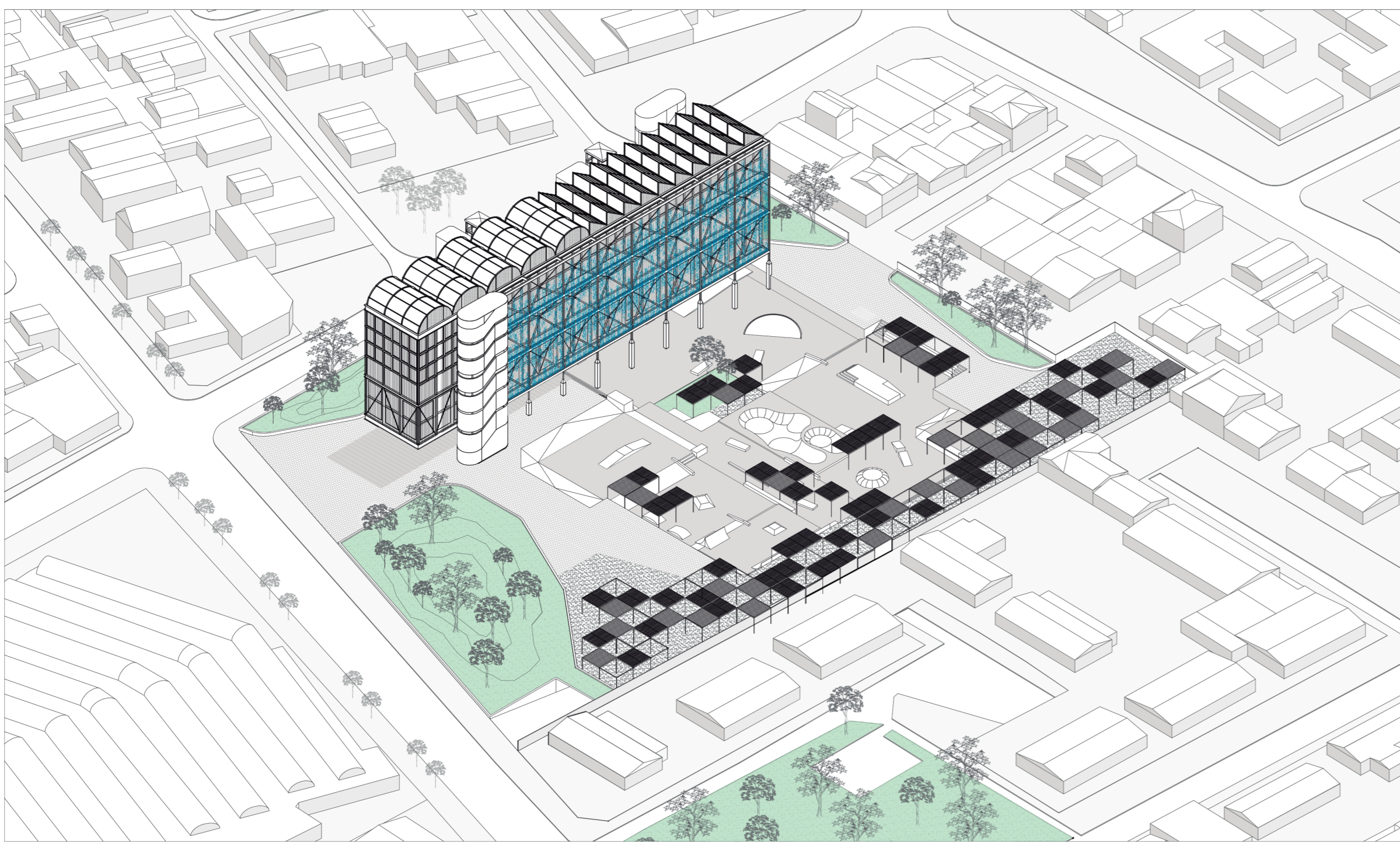


PISO 7
GYM
COMEDOR
ESC 1:200

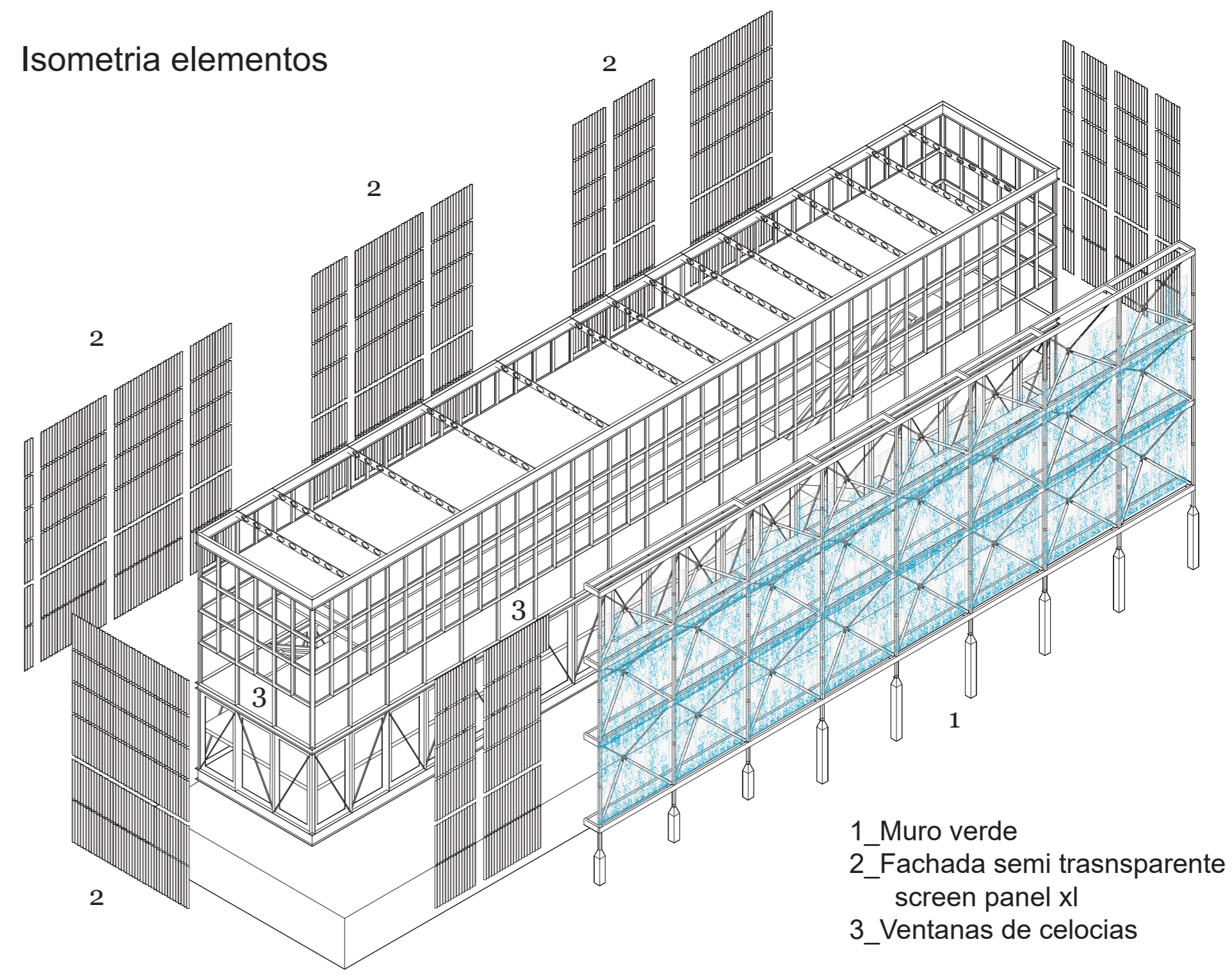


CORTE B-B
TRANSVERSAL
ESC 1:200

Elementos bioclimaticos

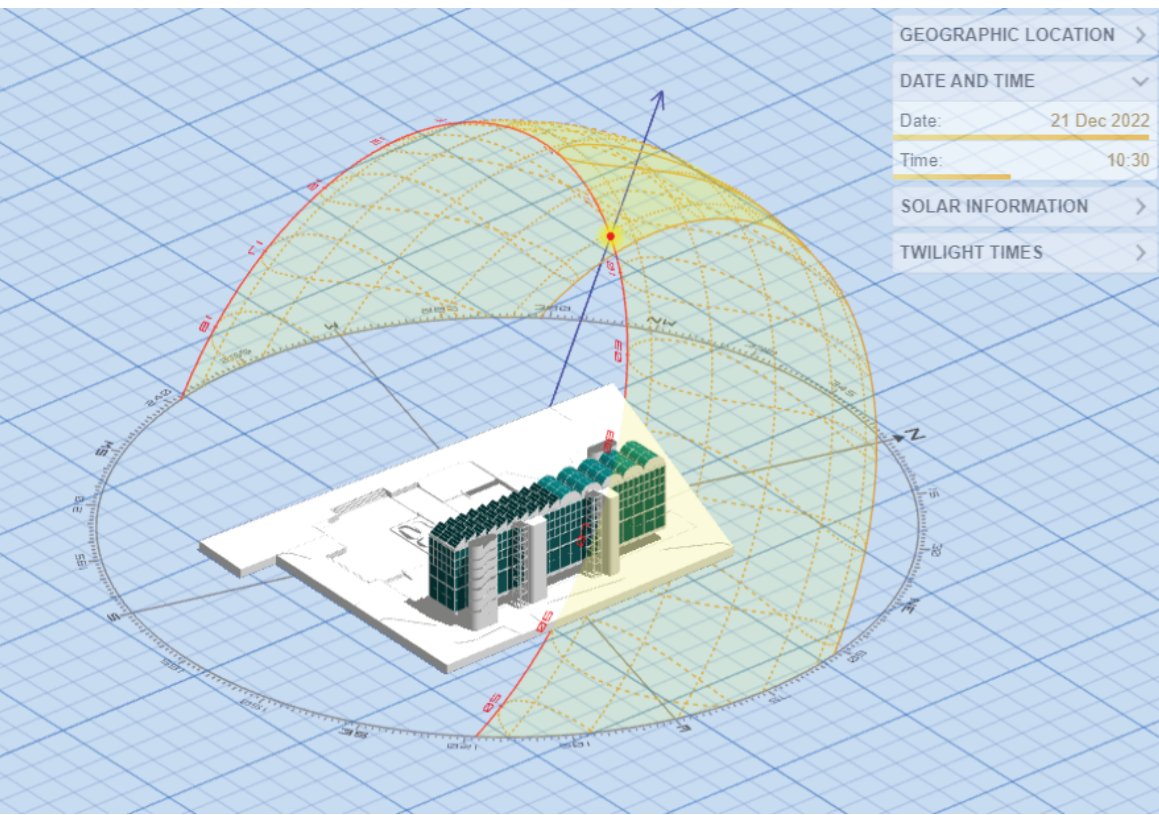


Isometria elementos

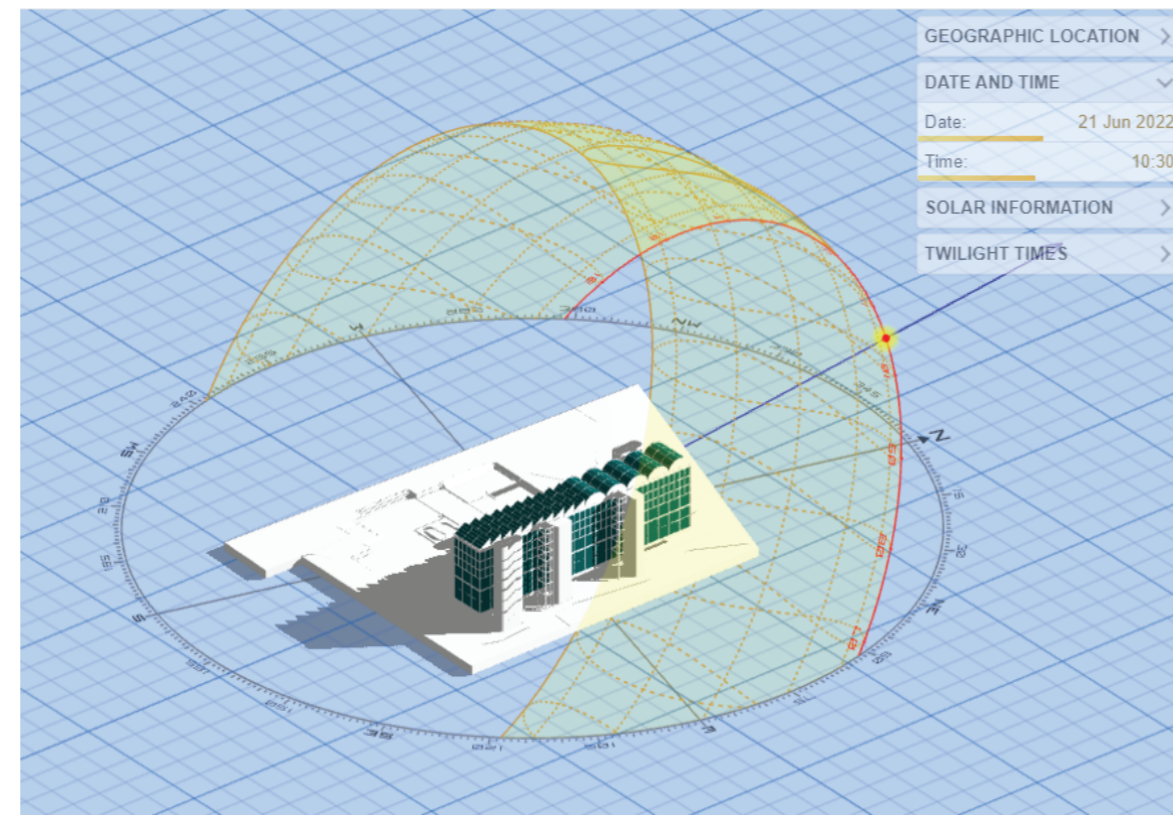


- 1_Muro verde
- 2_Fachada semi transparente screen panel xl
- 3_Ventanas de celicias

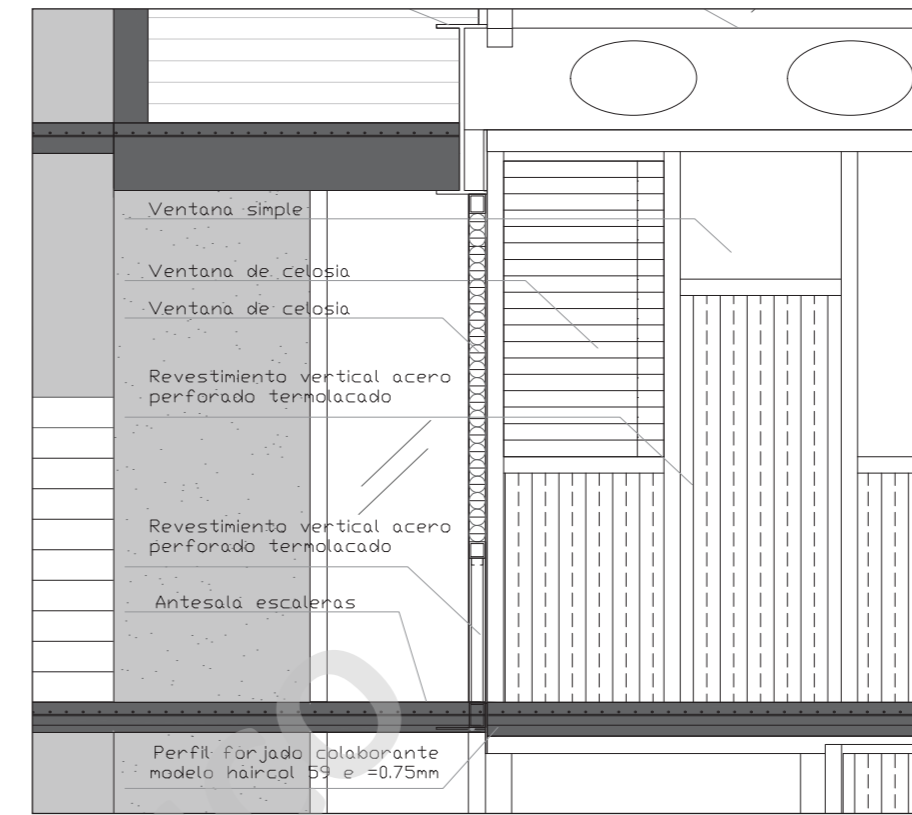
Carta solar verano



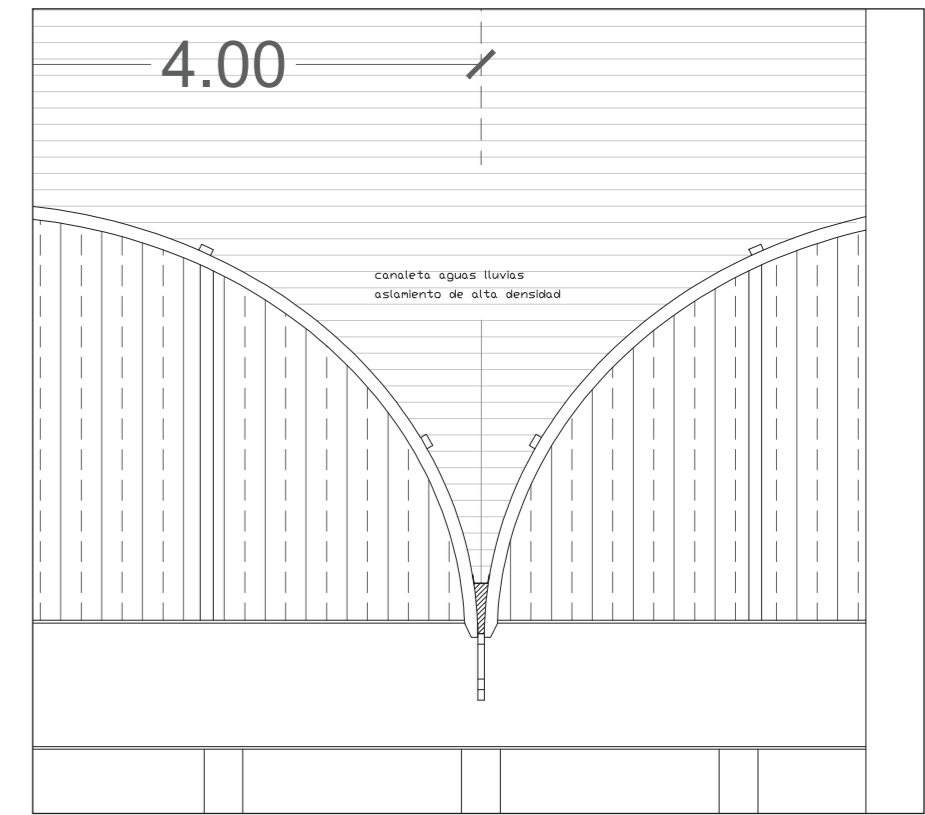
Carta solar invierno



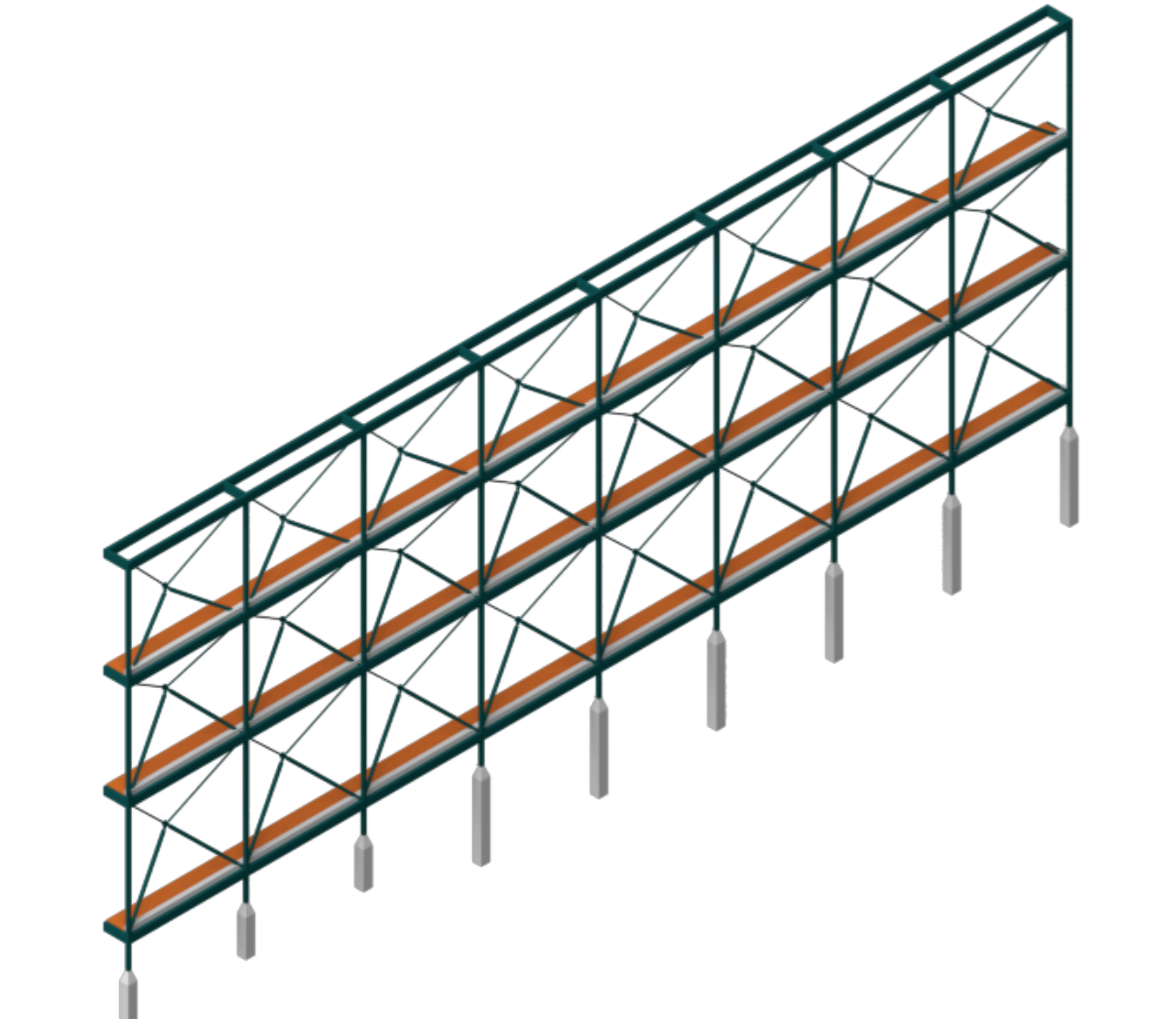
Detalle ventana de celicias



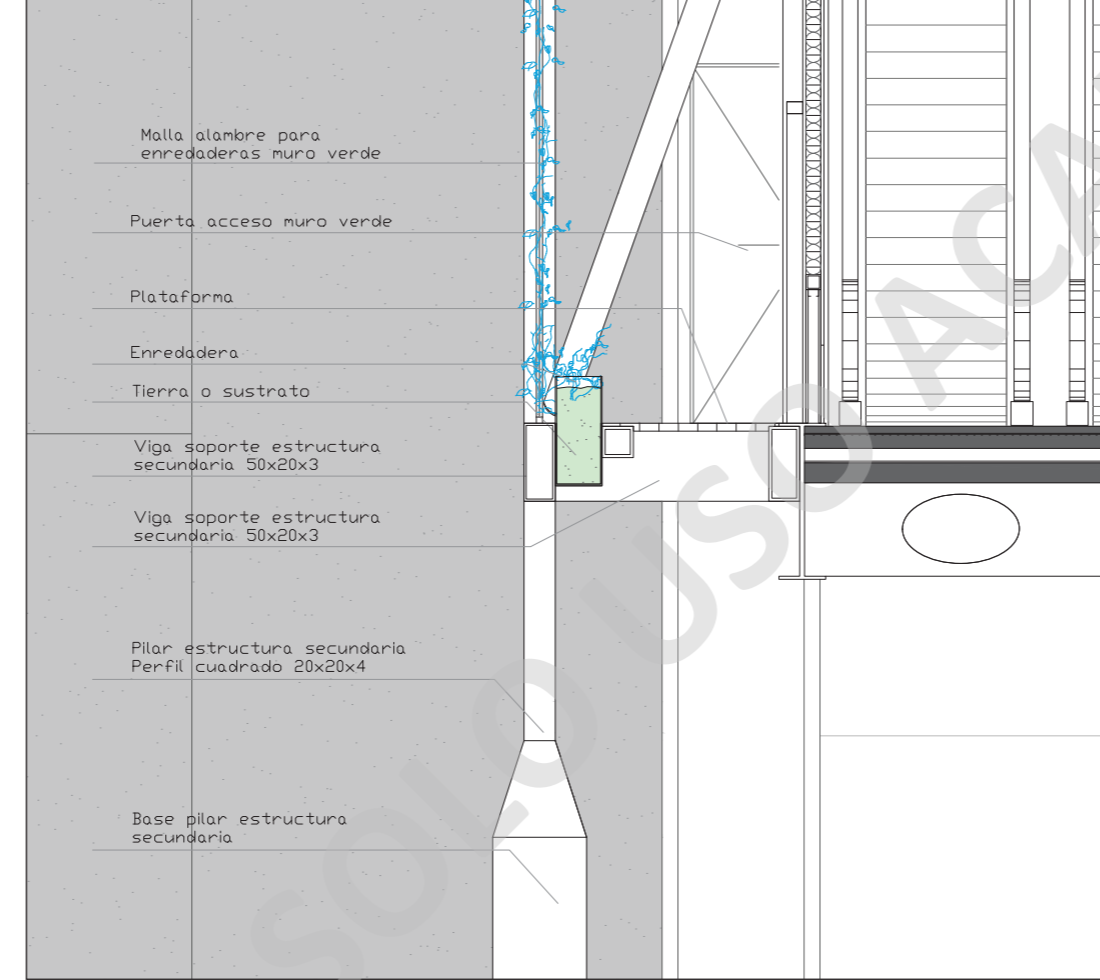
Detalle agua lluvia



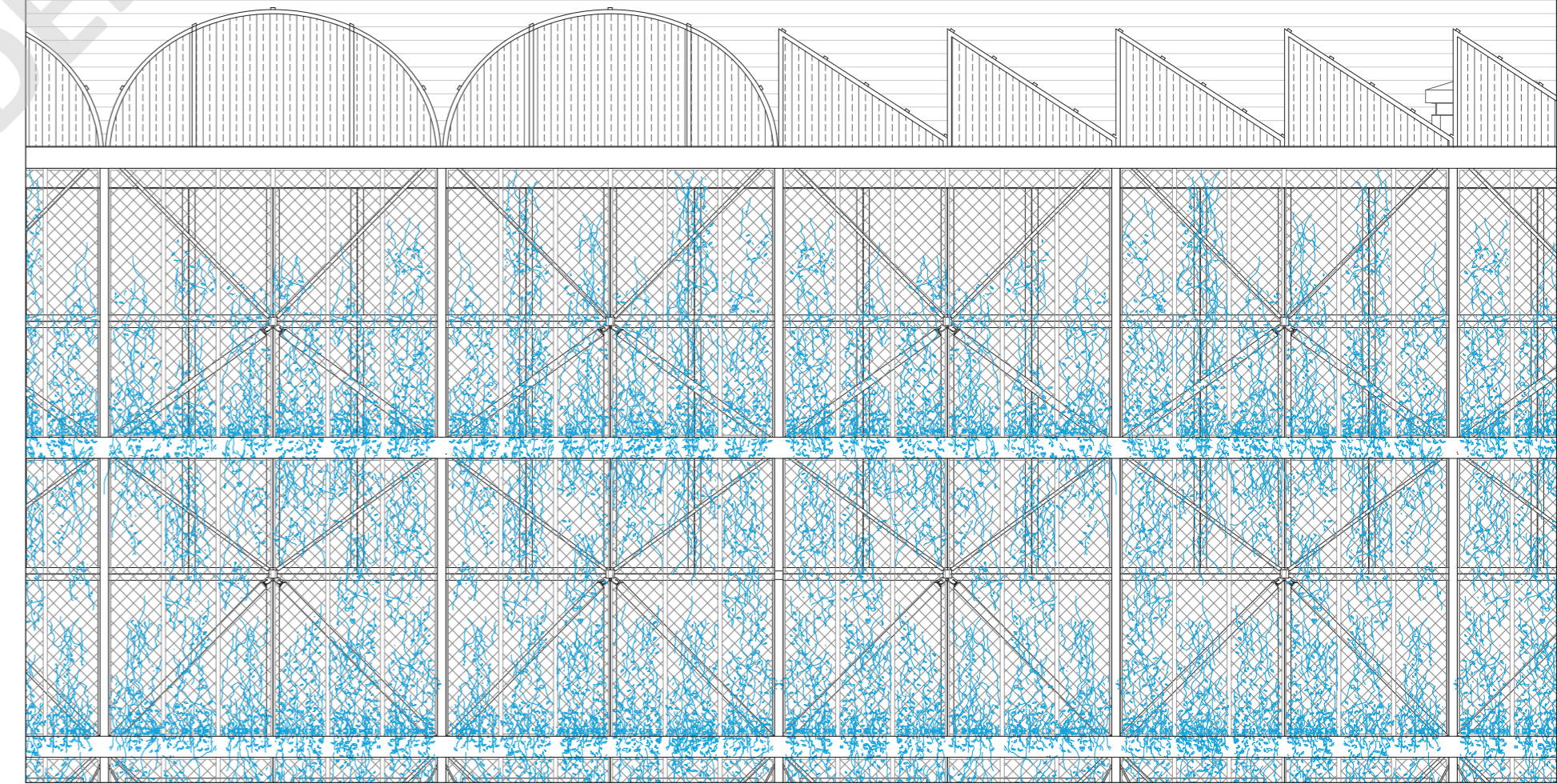
Estructura secundaria / Muro verde



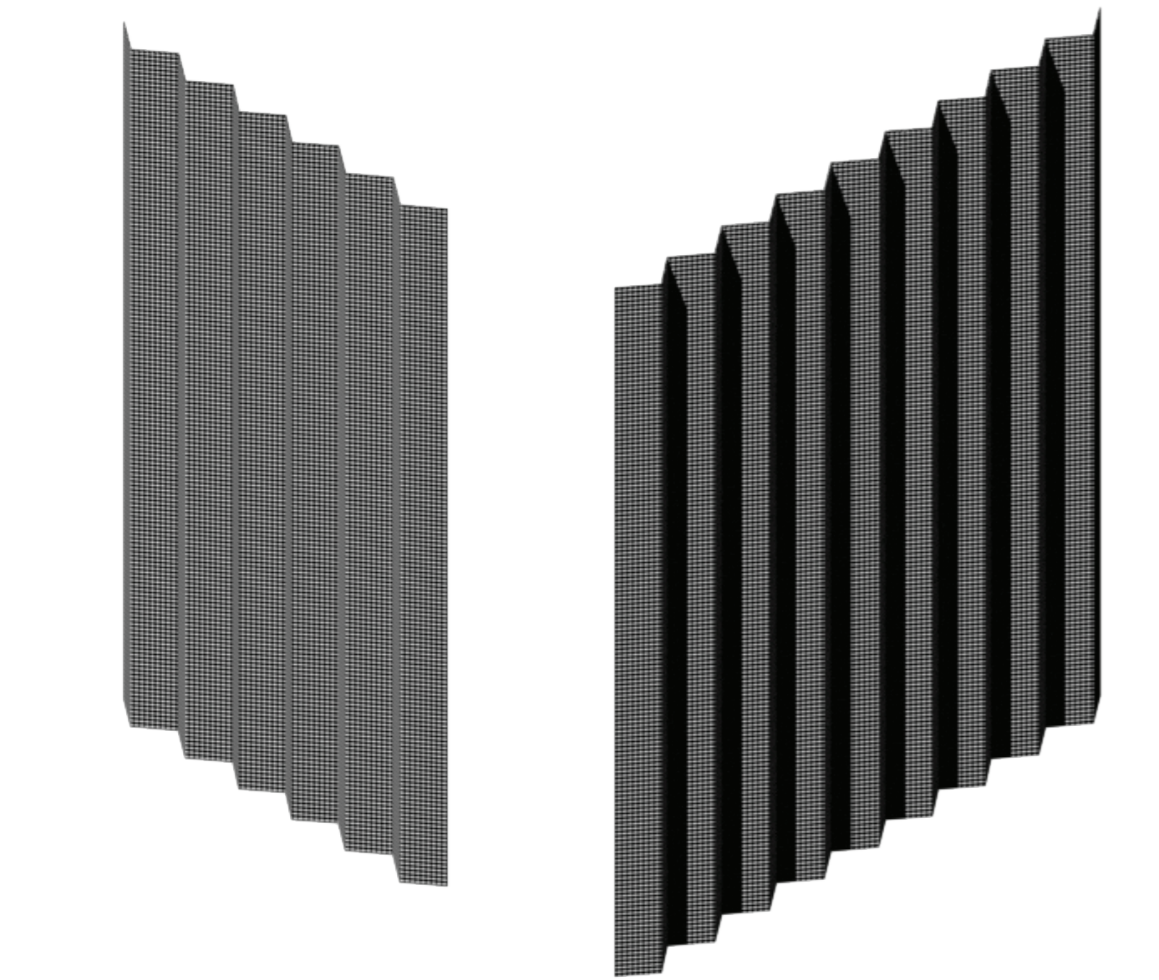
Detalle / Muro verde



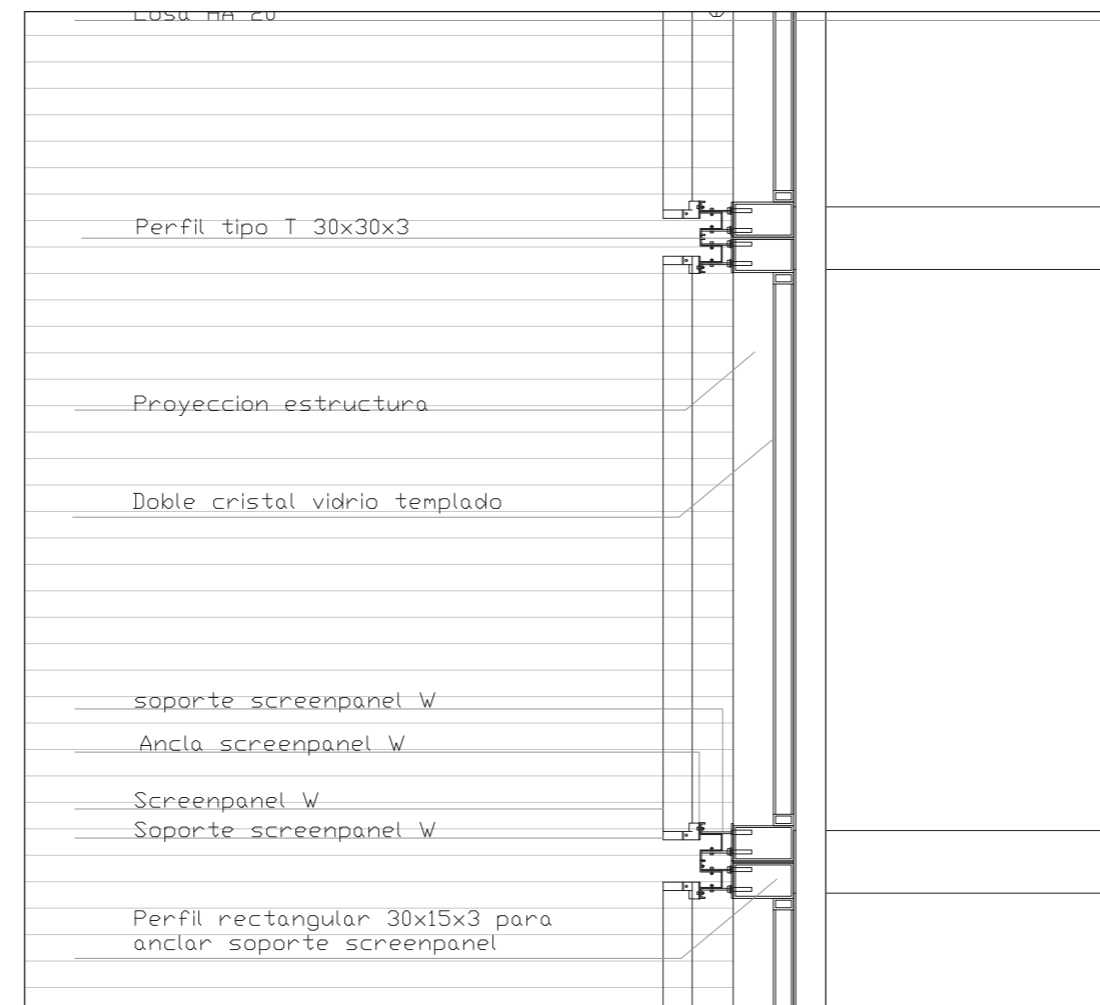
Elevacion / Muro verde



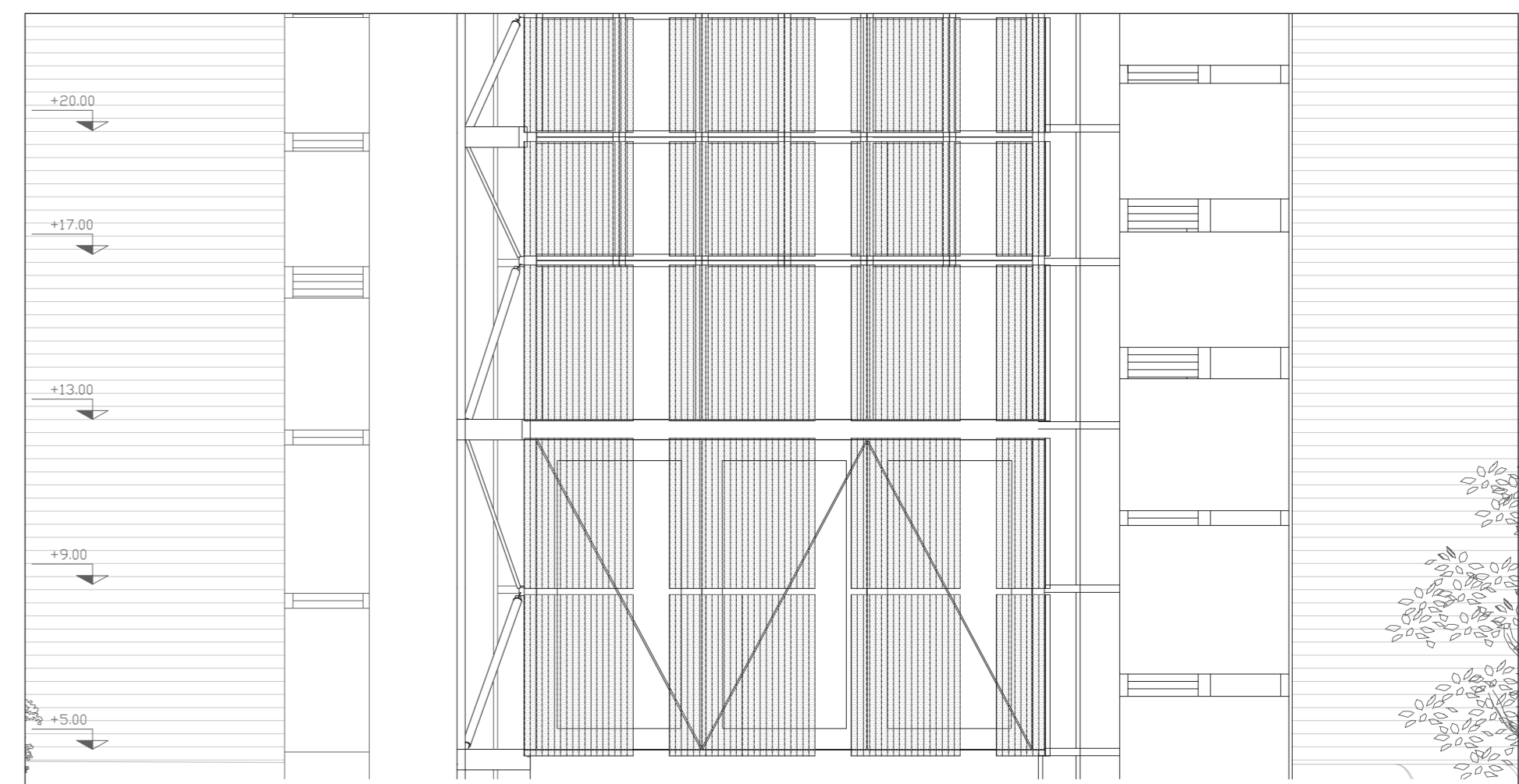
Fachada semi transparente screen xl



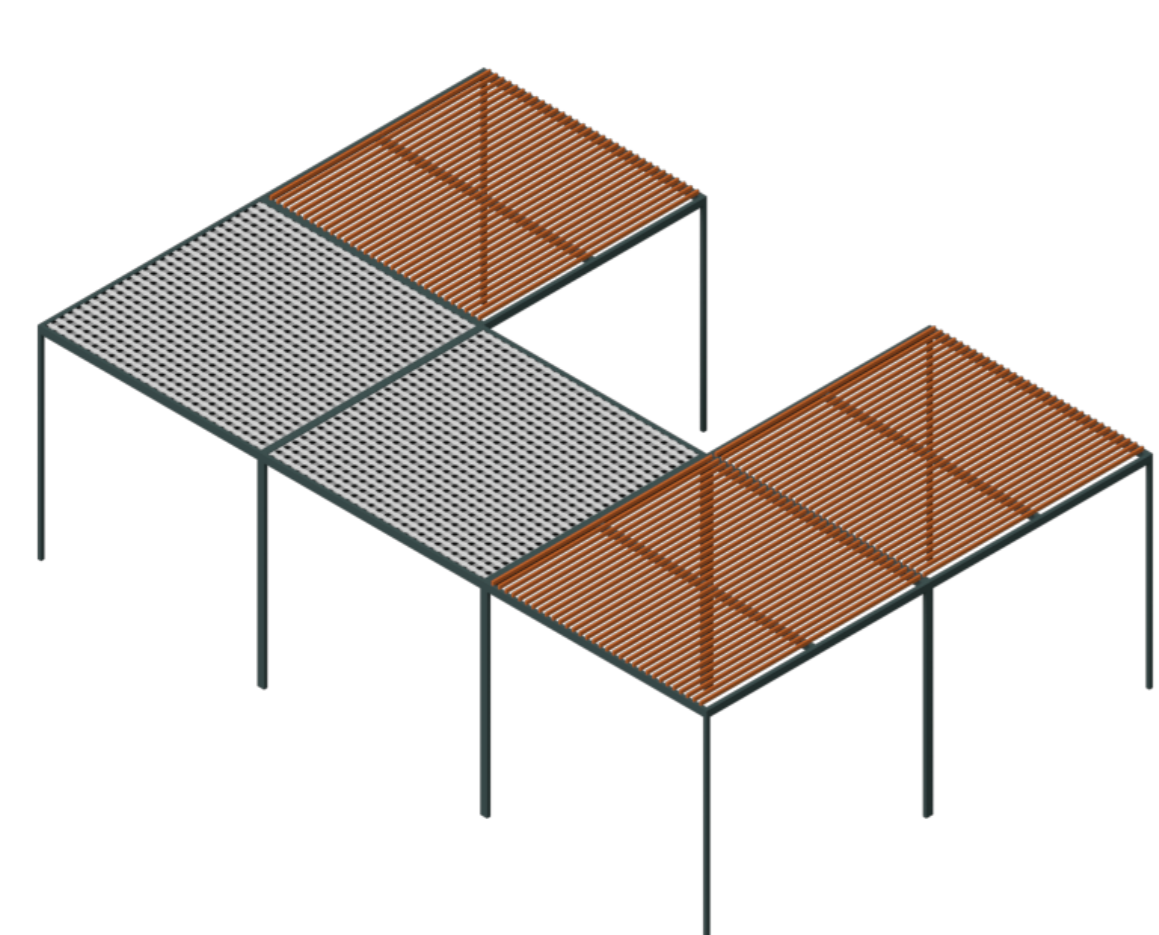
Detalle / screen xl



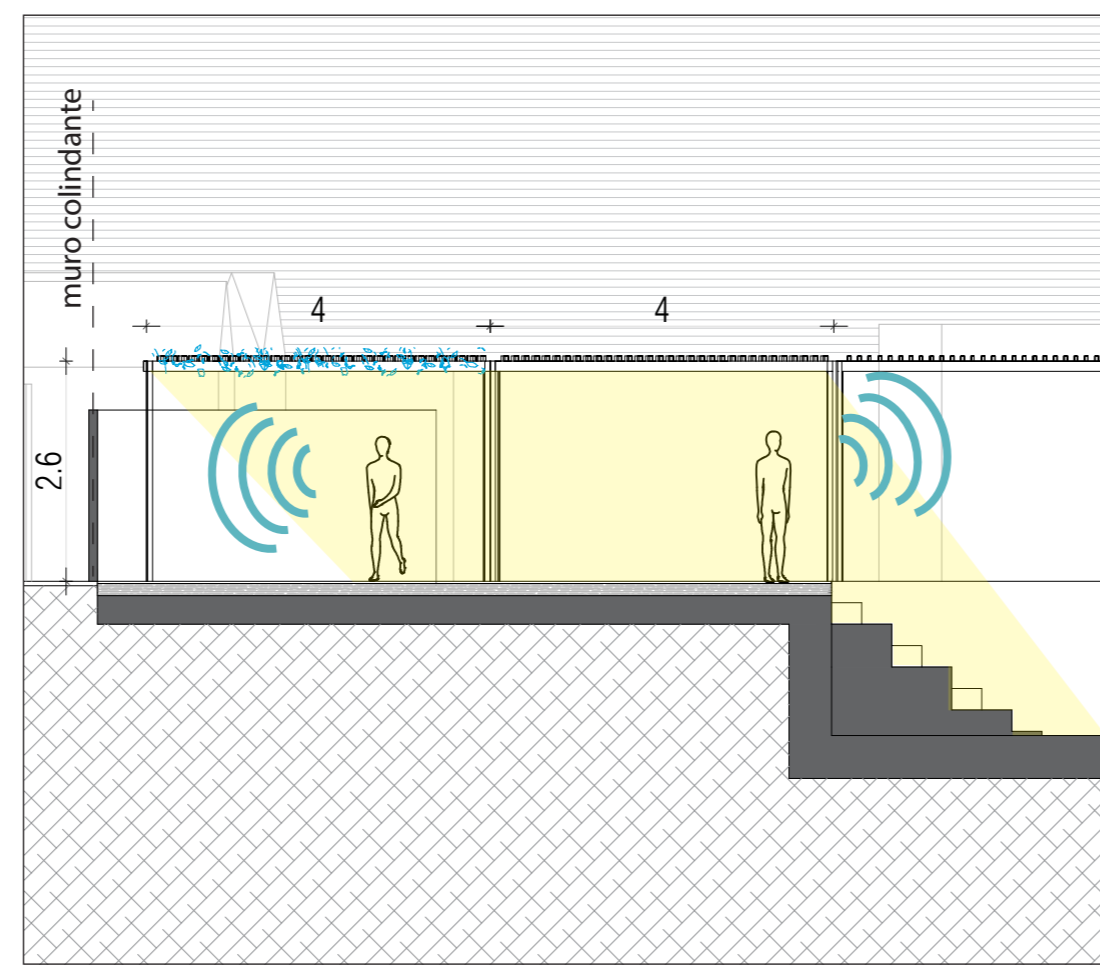
Elevacion / screen xl



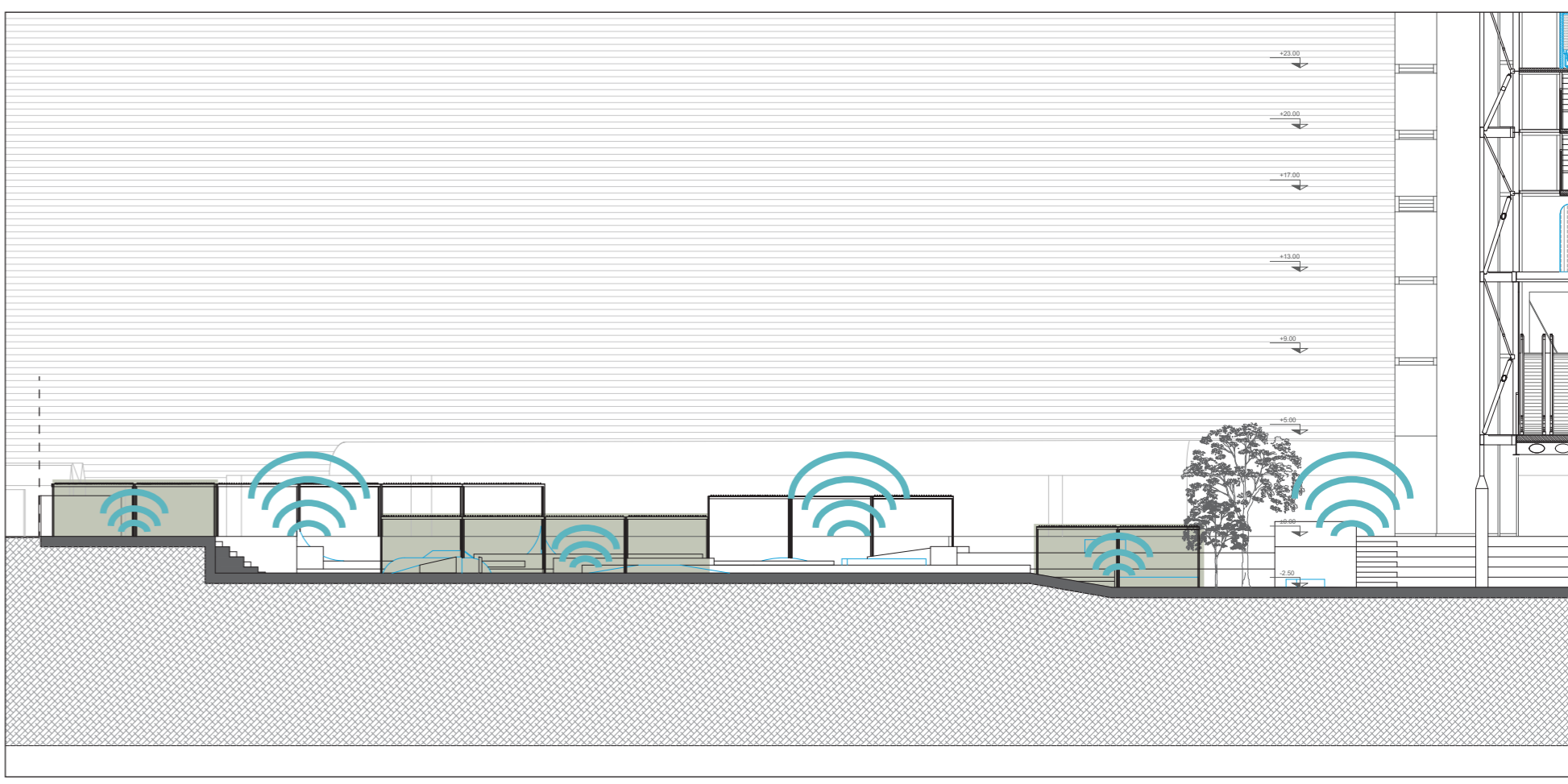
Pergolas / Sombreadero



Detalle / Pergolas

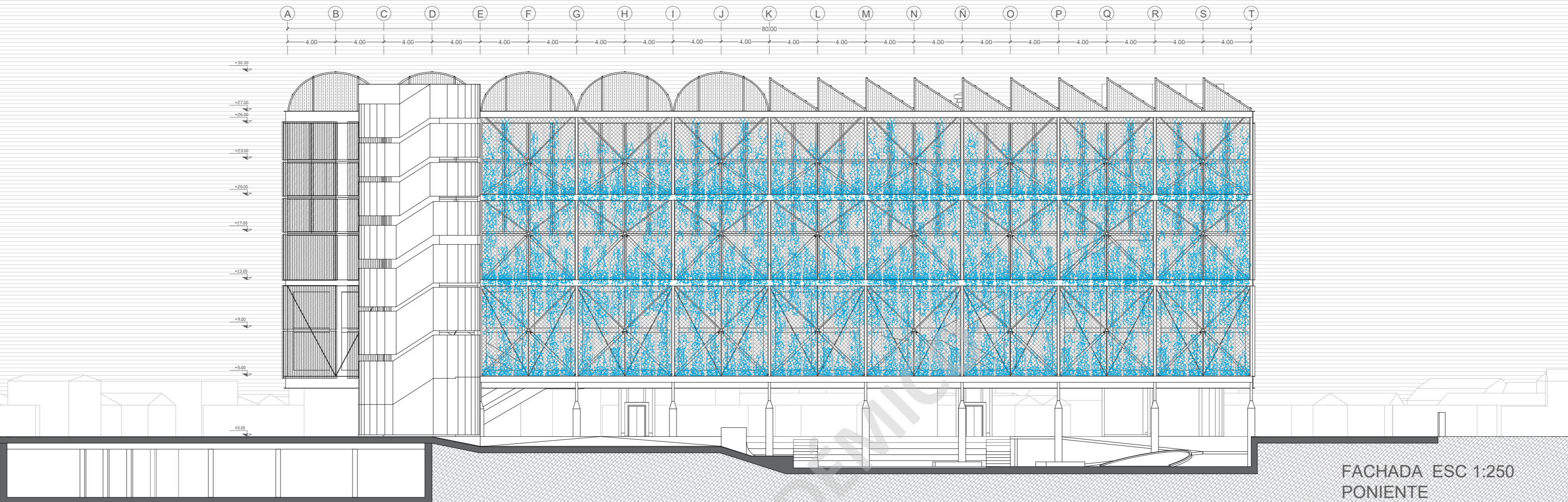


Esquema / pergolas

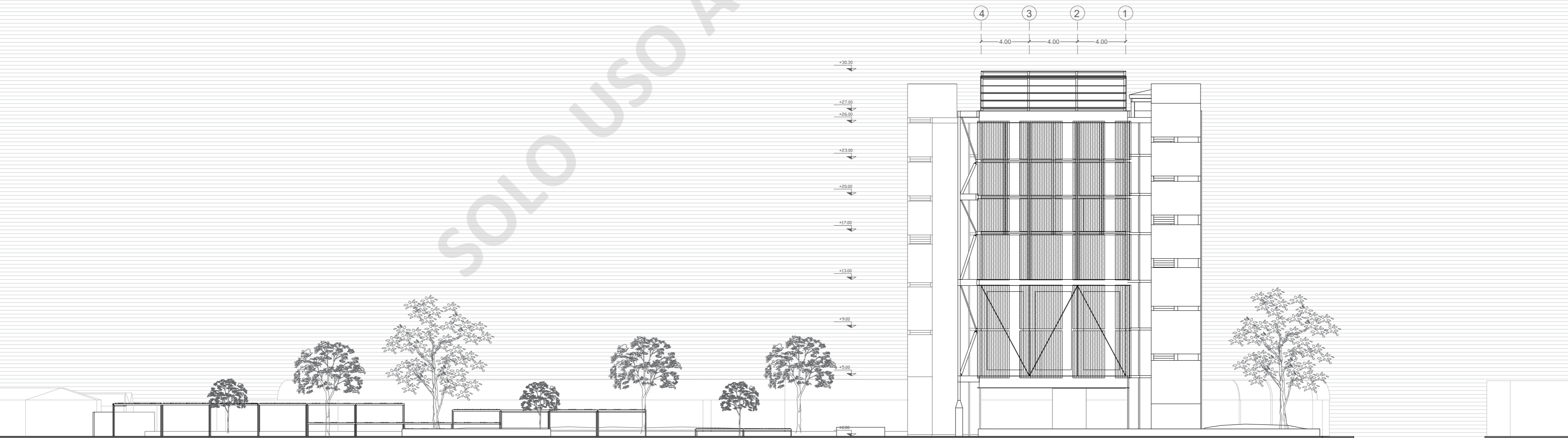




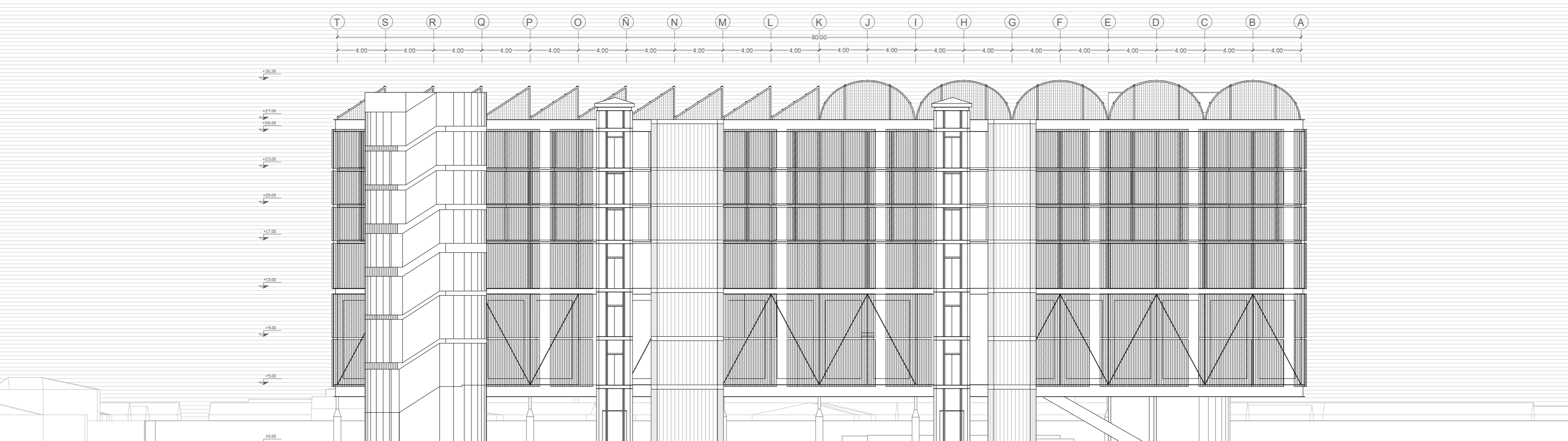
FACHADA ESC 1:250
NORTE



FACHADA ESC 1:250
PONIENTE



FACHADA ESC 1:250
SUR



FACHADA ESC 1:250
ORIENTE

